

Dated:- 27.10.2025

JKLC/DU/ENV/MoEF/07

To,  
Deputy Inspector General of Forest  
Ministry of Environment Forest and Climate Change  
Sub- Regional office , Raipur  
Aranya Bhawan, North Block, Sector-19,  
Naya Raipur, Atal Nagar, Chhattisgarh

**Sub: Submission of Half Yearly EC Compliance Report 2025 for the period April 2025 To September 2025 for M/s JK Lakshmi Cement Limited Durg (CG)**

**Ref: MoEF & CC Clearance letter no. J-11011/1170/2007-IA II(I) Dated 13<sup>th</sup> May 2009 and validity extension of EC on 04.09.2015 & EC Amendment on 27 Feb 2010, 23 July 2015, 07 June 2017, 20 July 2018, and 14 November 2018)**

Sir,

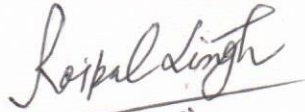
As per Environment Clearance given by MoEF & CC vide its letter no. J-11011/1170/2007-IA II (I) Dated 13.05.2009, we are hereby submitting half yearly compliance report for our Integrated Cement Plant (Clinker 1.98 MTPA, Cement 5 MTPA), Captive Thermal Power Plant (20 MW) and Waste Heat Recovery Based Power Plant – (10 MW) situated at village- Malpuri –Khurd, khasadih, and for Lime stone Mines (Limestone production capacity 4.8 MTPA from 267.695 ha & 252.105 ha) situated at village- Semariya, Ghikuriya and Nandini Kundini, Tehsil- Dhamdha, District Durg, C.G. for the period of **"April 2025 to September 2025"**.

It may be noted that we are forwarding, half yearly compliance report with annexures through mail on the mail address: [iro.raipur-mefcc@gov.in](mailto:iro.raipur-mefcc@gov.in) for your reference.

Thanking you

Yours Faithfully

For JK Lakshmi Cement LTD.



**Rajpal Singh**

**(Plant Head - Works )**

**Encl: As above**

- CC: 1. Regional Officer- Chhattisgarh Environment Conservation Board , Bhilai, Dist.- Durg. (CG)**  
**2. Member Secretary Chhattisgarh Environment Conservation Board, Paryawas Bhavan, North Block Sector-19, Atal Nagar, Raipur (C.G.) 492002**  
**3. Zonal Officer- Central Pollution Control Board- Parivesh Bhawan E-5 Paryavan Parisar Arera Colony Bhopal- 462016**

**ENVIRONMENTAL CLEARANCE CONDITION COMPLIANCES AS STIPULATED IN ENVIRONMENTAL  
CLEARANCE AND THEIR SUBSEQUENT AMENDMENTS, FOR  
JK LAKSHMI CEMENT LTD., INTEGRATED CEMENT PLANT AND LIMESTONE MINES**

MOEF (I.A. Division) granted EC vide F. No. J-11011/1170/2007-IA II (I) for Integrated Cement Plant (Clinker, 3.0 MTPA, Cement 10.0 MTPA), Limestone mine (4.8 MTPA, 267.695 ha and 281.339 ha) and Captive Power Plant (40 MW) dated 13<sup>th</sup> May 2009.

Subsequently MOEF & CC has given extension of validity of Environmental clearance vide F. No. J-11011/1170/2007-IA II (I), which was obtained for completion of balance works of phase-I dated 4<sup>th</sup> September 2015.

- EC Amendment was made by MOEF vide F. No. J-11011/1170/2007-IA II (I) regarding change of plant location dated 27<sup>th</sup> February 2010.
- EC Amendment was made by MOEF & CC vide F. No. J-11011/1170/2007-IA II (I) regarding change of mode of limestone transport dated 23<sup>rd</sup> July 2015.
- EC Amendment was made by MOEF & CC vide F. No. J-11011/1170/2007-IA II (I) regarding opening of second pit in the ML area of project dated 07<sup>th</sup> June 2017. However, there were no conditions specified in this amendment.
- EC Amendment was made by MOEF & CC vide F. No. J-11011/1170/2007-IA II (I) regarding reduction of mining lease area from 281.339 ha to 252.105 ha and interception of ground water table during mining operation dated 20<sup>th</sup> July 2018.
- EC Amendment was made by MOEF & CC vide F. No. J-11011/1170/2007-IA II (I) regarding change in configuration of Clinker production of 1.5 MTPA to 1.98 MTPA through Up-gradation and Optimization in Phase-I under the provisions of EIA Notification, 2006. Dated 14<sup>th</sup> November 2018

**COMPLIANCES OF CONDITION STIPULATED IN ENVIRONMENTAL CLEARANCE**

**(Ref: F. No. J – 11011/1170/2007 – IA II (I) dated 13<sup>th</sup> May, 2009)**

**(Period- APRIL -2025 to SEP -2025)**

<b>Sr. No.</b>	<b>CONDITIONS</b>	<b>STATUS OF COMPLIANCE</b>
i	continuous monitoring system to monitor gaseous emission shall be provided and the limit of SPM shall be controlled within 50 mg/Nm <sup>3</sup> by installing an adequate air pollution control system.	<ul style="list-style-type: none"><li>• <b>Continuous Emission monitoring System for the monitoring of Sox, NO<sub>x</sub> and CO is installed at RABH stack and Opacity meter are installed at all major stacks for the monitoring of the SPM. The emission of SPM is maintained below 30 mg/Nm<sup>3</sup> as we have installed state of art Air Pollution Control Equipment with adequate capacities. Pl. refer Annexure 1.</b></li></ul>
ii	High efficiency electrostatic precipitators (ESPs) to clinker cooler and AFBC boiler (CPP); bag house to raw mill / kiln system, coal /pet coke mill system and cement mill, bag filters to crushing plant, raw mill hopper, blending silo / kiln feed, clinker storage, cement mill hopper, cement silo, transfer points, packing plant etc shall be provided to reduce pollution and gaseous emissions to <50 mg/Nm <sup>3</sup> . AFBC boilers shall be installed to control SO <sub>2</sub> and NO <sub>x</sub> emissions. At no time, particulate emissions from the cement plant shall exceed 50 mg/Nm <sup>3</sup> . All the pollution control equipment's in raw mill / kiln, kiln feeding system, clinker cooler, coal mill, cement mill and cement silo shall be interlocked so that the event of the pollution control equipment not working, the respective unit (s) is shut down automatically. Continuous stack monitoring facilities for all the stacks and adequate air pollution control systems shall be provided and data submitted to the Ministry's Regional Office Bhopal half yearly, CPCB and CECB quarterly.	<ul style="list-style-type: none"><li>• <b>Reverse Air Bag House Installed at Raw Mill/Kiln system. High efficiency Electrostatic precipitator installed at Clinker Cooler. Pl. refer Annexure 2</b></li><li>• <b>The mills including Coal mill, Slag Mill, Cement Mill -1 and -2 are fully equipped with the efficient bag filters Pl. refer Annexure 2.</b></li><li>• <b>Efficient dust extraction systems (Bag filters) are installed at all transfer points, such as - conveyors, crushing plants, Material handling units, materials storage area, storage silos to maintain the emission level Below 30 mg/Nm<sup>3</sup>. Pl. refer Annexure 2.</b></li><li>• <b>Interlocked systems has been already provided at all major Air pollution control equipment for auto shut down in case of failure of any pollution control equipment.</b></li><li>• <b>Continuous Stack emission monitoring data are being uploaded on the CPCB server. Pl. refer Annexure 1 .</b></li><li>• <b>Half yearly compliance report is being submitted timely to MOEFCC regional office and Quarterly Environment Report submitted to CPCB and CECB.</b></li></ul>
iii	Ambient air quality monitoring stations shall be set up in the down wind direction as well where maximum ground level concentration of SPM, SO <sub>2</sub> and NO <sub>x</sub> are anticipated as per statutory requirement in consultation with Chhattisgarh Environment Conservation Board (CECB). Ambient	<p><b>Being Complied.</b></p> <ul style="list-style-type: none"><li>• <b>To continuously monitor Ambient Air- Continuous ambient air monitoring system are already installed at Plant and Mines premises. Pl. refer Annexure 3.</b></li></ul>

	air emission shall not exceed the standards stipulated under EPA or by the State authorities. Monitoring of ambient air quality shall be carried out regularly in consultation with CECB and data submitted to the Ministry's Regional Office at Bhopal half –yearly, CPCB and CECB quarterly.	<ul style="list-style-type: none"> <li>• <b>Data of ambient air quality monitoring are being displayed on a display board installed at the main gate of the Cement Plant &amp; Limestone Mine.</b></li> <li>• <b>Ambient air quality monitoring report are being submitted to the concerned authority as per given time.</b></li> </ul>
<b>iv</b>	The fugitive emissions during loading and unloading should be suitably controlled by installing adequate dust collection and extraction system and at all the transfer points. Fugitive emissions shall also be controlled by providing silos and closed roof sheds for raw materials and product. Water sprinkling arrangement shall be made in the raw material stock yard and cement bag loading areas to prevent fugitive emissions. Bag filters shall be provided to coal and limestone handling system. Dust suppression system and water spraying shall be provided in the mine area to control fugitive emissions due to drilling and handling and transportation of general public.	<ul style="list-style-type: none"> <li>• <b>Efficient dust collection and extraction systems (Bag filters) are installed at all loading, unloading and all transfer points.</b></li> <li>• <b>All the raw materials including limestone, Coal, Slag &amp; Gypsum etc. are being stored in the closed sheds.</b></li> <li>• <b>Silos are provided for the storage of Clinker, Fly ash and Cement. Pl. refer Annexure 4 (A)</b></li> <li>• <b>Efficient Bag Filters are provided at Coal and Limestone handling systems.</b></li> <li>• <b>Dust Suppression and water sprinkling, systems have been already provided at mines area.</b></li> <li>• <b>Wet drilling method is being imparted to control the dust emission during drilling.</b></li> <li>• <b>02 No water tankers engaged for dust suppression purposes at Plant &amp; Mines. Pl. refer Annexure 4 (B)</b></li> </ul>
<b>v</b>	Data on ambient air quality, stack emission and fugitive emissions shall be uploaded on the company website and also regularly submitted on- line to the Ministry's Regional Office at Bhopal, Chhattisgarh Environment Conservation Board (CECB) and Central pollution Control Board (CPCB) as well as hard copy once in six months. Data on SPM, SO <sub>2</sub> and NO <sub>x</sub> shall also be displayed prominently outside the premises at the appropriate place for the information of general public	<ul style="list-style-type: none"> <li>• <b>Data of ambient air quality monitoring are being displayed on display board installed at main gate of the Cement plant &amp; Mines for the information of general public.</b></li> </ul> <p><b>Pl. refer Annexure 5.</b></p> <ul style="list-style-type: none"> <li>• <b>Connectivity of online ambient air quality monitoring and stack emission monitoring data with CPCB server has been provided.</b></li> <li>• <b>Data on ambient air quality, stack emission and fugitive emissions are being uploaded on the company website along with Half yearly EC Compliance report.</b> <ul style="list-style-type: none"> <li>• <b>Link for the online server are -</b>  <a href="https://rtdms.cpcb.gov.in/#/p/industry-login">https://rtdms.cpcb.gov.in/#/p/industry-login</a></li> <li>• <a href="http://cecb.glensserver.com/www.envsaindia.com/cpcb/login.php">http://cecb.glensserver.com/www.envsaindia.com/cpcb/login.php</a></li> </ul> </li> </ul>
<b>vi</b>	Secondary fugitive emissions from all the sources shall be controlled within the permissible limits by the Ministry and regularly monitored. Guidelines/Code of Practice issued by the CPCB shall be followed.	<ul style="list-style-type: none"> <li>• <b>All necessary measure has been taken to control the Secondary fugitive emissions within the permissible limits. To arrest the secondary fugitive emission from the sources, we have also truck mounted /vacuum cleaning road sweeping</b></li> </ul>



		<p>machine. Pl. refer Annexure 6.</p> <ul style="list-style-type: none"> <li>• Guideline of Practice issued by the CPCB is being followed.</li> <li>• Green belt has been developed along with roadside to arrest the fugitive dust emission. Pl. refer Annexure 7.</li> </ul>
<b>vii</b>	Asphalting /Concreting of roads and water spray all around the critical areas prone to air pollution and having high levels of SPM and RPM shall be ensured.	<ul style="list-style-type: none"> <li>• The plant and mines area have concrete roads for road transportation. Pl. refer Annexure 7.</li> <li>• 02 no's water tanker have been provided for dust suppression purposes at Mines haul roads and plant premises. Pl. refer Annexure 4(B).</li> <li>• We are ensuring that to reduce the high levels of SPM and RPM emission.</li> </ul>
<b>viii</b>	No new pit shall be opened till old pit is exhausted	<ul style="list-style-type: none"> <li>• Noted and agreed.</li> <li>• Please note that EC amendment has been obtained from MOEF &amp; CC vide letter no. J-110/1770/2007-IA II (I) dated 07.06.2017 to facilitate use of low-grade limestone (Mineral Conservation) for blending with high grade limestone to optimize life of mine.</li> </ul> <p>Pl. refer Annexure 8.</p>
<b>ix</b>	Efforts shall be made to reduce the impact of the transport of raw materials and end products on the surrounding environment, including agricultural land. All the raw materials, including fly ash, shall be transported in closed containers only and should not be overloaded. Vehicular emissions shall be regularly monitored.	<ul style="list-style-type: none"> <li>• Being complied</li> <li>• All the raw materials transported with tarpaulin covered trucks. And fly ash is being transported in closed containers/bulkers.</li> <li>• It is being ensured that raw material vehicles are not overloaded.</li> <li>• Vehicular emission is being monitored on a regular basis through PUC checking.</li> </ul> <p>Pl. refer Annexure 9.</p>
<b>x</b>	Total water requirement from Shivanath River and bore wells shall not exceed 4500 m <sup>3</sup> /day. The water stored in the artificial reservoir made in the mines pit shall be used maximum to reduce ground water consumption. Air cooled condensers shall be provided to CPP to reduce water consumption. The process effluent from CPP treated in neutralization pit shall be recycled back in the process after treatment and used for cooling and dust suppression. Mining shall not intercept ground water tables. No effluent shall be discharged from the cement plant, captive power plant and limestone mines and 'Zero' discharge should be strictly followed. Domestic wastewater shall be treated in sewage treatment	<ul style="list-style-type: none"> <li>• Being complied</li> <li>• Domestic wastewater is being treated through root zone technology-based Sewage Treatment plant with installed capacity 70 m<sup>3</sup>/day is under operation and the treated water is being utilized for the Dust suppression and green Belt development at Plant and Mines premises. Pl. refer Annexure 10.</li> <li>• Air cooled condenser is provided in CPP to reduce water consumption. Pl. refer Annexure 11.</li> <li>• Zero discharge is being maintained which is being strictly followed</li> <li>• Approval for interception of ground water table during mining operation has already been obtained by EC amendment from MOEF &amp; CC vide</li> </ul>

	plants (STP) and used for green belt development.	<p>letter no. J-11011/1770/2007-IA II (I) dated 20 July 2018.</p> <p>• Pl. refer Annexure 12.</p>
<b>xi</b>	Permission for the drawl of 4500 m <sup>3</sup> /day water from Shivanath river and ground water from CGWA/SCWP / concern department shall be obtained and copy of the permission shall be submitted to the Ministry's Regional office at Bhopal.	<ul style="list-style-type: none"> <li>• Permission for the drawl of water from Shivanath river for the industrial purpose has been obtained from Water Resource Department and ground water permission from borewells has been already obtained from Central ground water board. Copy of both permission is enclosed in Annexure 13.</li> </ul>
<b>xii</b>	Detailed hydrological study shall be carried out and implementation of recommendations of the detailed hydrological study shall be ensured.	<ul style="list-style-type: none"> <li>• Detailed hydrological study has been carried out and the status of compliances being regularly submitted to the CGWA. To recharge the ground water, we have constructed 53 no's rainwater harvesting pit, 02 no's conservation pond within plant and mines premises to recharge the ground water @ 16 Lacs m<sup>3</sup>/year based on 1000 mm average rainfall /year. Pl. refer annexure 14</li> </ul>
<b>xiii</b>	All the bag filter dust, raw meal dust, coal dust, clinker dust and cement dust from Pollution control devices shall be recycled and reused in the process and used for cement manufacturing. STP sludge shall be used as manure. Waste oil shall be sold to authorized recyclers/re-processors only.	<ul style="list-style-type: none"> <li>• All the bag filter dust, raw mill dust, coal dust, clinker dust and cement dust from Pollution control devices are being recycled and reused in the process and used for cement manufacturing.</li> <li>• We have installed root zone technology based STP to treat the wastewater generated from worker colony and there is no generation of sludge. The generated waste oil is being sold to authorized recyclers as and when required.</li> </ul>
<b>xiv</b>	An effort shall be made to use of high calorific hazardous waste in the cement kiln and necessary provision shall be made accordingly.	<ul style="list-style-type: none"> <li>• Being complied.</li> <li>• High calorific hazardous waste is being co-processed in cement kiln through AFR system .Pl. refer annexure - 15</li> </ul>
<b>xv</b>	Effort shall be made to use low grade lime, more fly ash and solid waste in cement manufacturing.	<ul style="list-style-type: none"> <li>• Being complied.</li> <li>• EC amendment has been obtained by MOEF and CC vide letter no. J-110/1770/2007-IA II (I) dated 07.06.2017 to facilitate use of low-grade limestone (Mineral Conservation) for blending with high grade limestone to optimize life of mine. Pl. refer annexure no. 16</li> </ul>
<b>xvi</b>	The action plan for mining, management of over burden (removal, storage, disposal etc.,) reclamation of the mined-out area and mines closure shall be submitted to the Ministry and its Regional office at Bhopal.	<ul style="list-style-type: none"> <li>• Action plan for mining, management of over burden (removal, storage, disposal etc.,) reclamation of the mined-out area and mines closure has already been submitted to the Ministry and its Regional office at Bhopal. It is</li> </ul>

		<p>being done as per the approved mining plan.</p> <p>submitted to the concern authority vide letter No. JKLC/Durg/Env/1109 dated 12.12.2011.</p>
<b>xvii</b>	All the fly ash should be utilized as per Fly Ash Notification, 1999 subsequently amended in 2003. Effort shall be made use fly ash generated from the captive power plant maximum in manufacturing Pozzolana Portland Cement (PPC)	<ul style="list-style-type: none"> <li>• Being complied</li> <li>• The generated fly ash from CPP is being utilized in our own cement plant for the manufacturing of Cement. Pl. refer annexure-17</li> </ul>
<b>xviii</b>	As proposed, green belt shall be developed in at least 78 ha (38%) out of total 210 ha area in the cement plant area and all the mined-out area except used for reservoir to reduce impact of fugitive emissions as per Central Pollution Control Board (CPCB) guidelines in consultation with DFO	<ul style="list-style-type: none"> <li>• JK Lakshmi Cement Ltd follows green practices that confirm with Green Globe Standards and is a responsive partner in ensuring a brighter tomorrow for future generations and Conservation of Environment. at about 40 no's of workers engaged in plantation work around the boundary as well in the mines area to maintain the plantations.</li> <li>• In our integrated cement plant total 1,11,139 native species plants have been planted in 79 ha out of 200.26 ha of land at plant premises which is more then 39 percent total land of plant, in which survival rate is at about more then of 90 percent</li> <li>• Limestone Mines area (covering ML-I, ML-II and ML-III) planted 2,35,473 native species plants in an area of 128.15. Ha, including within lease &amp; outside of lease in which survival rate is at about more then of 90 percent .</li> <li>• Two water tankers have been engaged for watering these plants.</li> <li>• Pl. Refer Annexure - 18</li> </ul>
<b>xix</b>	Wet drilling blasting method and provision for the control air emissions during blasting using dust collectors etc. shall be used.	<ul style="list-style-type: none"> <li>• Wet drilling/controlled blasting technique is being used to control the dust emission during blasting. Pl refer annexure- 19.</li> </ul>
<b>xx</b>	Bench height, width and slope for individual bench shall be properly assessed and implemented. Adequate measures shall be adopted to stabilize the slope before abandonment. The fencing around the reservoir shall be provided to prevent accidents.	<ul style="list-style-type: none"> <li>• Being complied.</li> <li>• Mining operations is carried out as per the Approved Mining plan.</li> <li>• The fencing around the reservoir has been provided to prevent accidents.</li> </ul> <p>Pl. refer annexure 20.</p>
<b>xxi</b>	The company shall obtained necessary	

	clearances/ approval from the concerned Departments i.e. 'No Objection Certificate' form the Chhattisgarh Environment Conversation Board (CECB) , Indian Bureau of Mines, State Government, MoEF & CC etc. for the linking mining component before undertaking any construction activity at the project site.	<ul style="list-style-type: none"> <li>• <b>Obtained all necessary Clearances /Approval from statutory concerned Department.</b></li> </ul>
<b>xxii</b>	All the safety norms stipulated by the Director General, Mines and Safety (DGMS) shall be implemented.	<ul style="list-style-type: none"> <li>• <b>DGMS guideline is Being followed</b></li> <li>• <b>The necessary Personal Protective Equipment (PPEs) has already been provided to the employees and workers. Pl. refer Annexure- 21.</b></li> </ul>
<b>xxiii</b>	The rehabilitation and resettlement plan for the project affected population including tribals as per the policy of the State Govt. of Chhattisgarh in consultation with the State Govt. shall be implemented. Compensation paid in any case shall not be less than norms prescribed under the National Resettlement and rehabilitation Policy '2007	<ul style="list-style-type: none"> <li>• <b>Rehabilitation and resettlement plan is not applicable to us.</b></li> </ul>
<b>xxiv</b>	All the recommendations mentioned in the Corporate Responsibility for Environment Protection (CREP) guidelines shall be followed implemented.	<b>Noted and Being Followed. CREP guideline compliance is attached in annexure- 22.</b>
<b>xxv</b>	The company shall provide housing for construction labor within site with all necessary infrastructure and facilities such as fuel for cooking, mobile toilet, mobile STP, safe drinking water, medical health care, crèche etc. The housing may be in the form of temporary structures to be removed after the completion of the project.	<ul style="list-style-type: none"> <li>• <b>The company has provided housing for labour within site with all necessary infrastructure and facilities like fuel for cooking, toilets, safe drinking water, medical health care, etc.</b></li> </ul>
<b>B.</b>	<b>GENERAL CONDITIONS:</b>	
<b>i</b>	The project authorizes must strictly adhere to the stipulations made by the Chhattisgarh Environment Conservation Board (CECB) and the State Government.	<ul style="list-style-type: none"> <li>• <b>Noted and being complied with.</b></li> </ul>
<b>ii</b>	No further expansion or modifications in the plant should be carried out without prior approval of the Ministry of Environment and Forests.	<ul style="list-style-type: none"> <li>• <b>Noted</b></li> <li>• <b>Please note that we have obtained EC amendment by MOEF &amp; CC vide their letter no. J-11011/1170/2007-IA II (I) dated 14.11.2018 for change in configuration of clinker production from 1.5 MTPA to 1.98 MTPA through up-gradation and optimization in phase 1. Pl. refer annexure no. 23.</b></li> </ul>



iii	The company shall provide adequate dust collection and extraction system to control fugitive dust emissions at various transfer points, raw mill handling (unloading, conveying, transportation, stacking), vehicular movement, bagging and packing areas etc. Asphaltting /concreting of roads and water spray all around the coal stockpiles shall be carried out to control fugitive emissions.	<ul style="list-style-type: none"> <li>• Adequate dust collection and extraction system provided at various transfer points, raw mill handling (unloading, conveying, transportation, stacking), bagging and packing areas to control fugitive dust emissions.</li> <li>• All internal road areas were concreted to control fugitive emissions during road transportation. Pl. refer annexure no. 7.</li> <li>• Water is being sprinkled all around the coal stockpiles to control fugitive dust emission. Pl. refer annexure no. 24.</li> </ul>
iv	Industrial wastewater shall be properly collected and treated to conform to the standards prescribed under GSR 422 (E) dated 19 <sup>th</sup> May 1993, and 31 <sup>st</sup> December 1993 or as amended from time to time. The treated wastewater shall be utilized for plantation purposes.	<ul style="list-style-type: none"> <li>• Domestic wastewater is being treated by root zone technology based STP. Treated water from STP is being utilized for green belt development and dust suppression purposes and there is no wastewater generated from cement manufacturing process. As it is based on dry process. We are being maintained at Zero Discharge status. Pl. refer annexure no. 10.</li> </ul>
v	The overall noise levels in and around the plant area shall be kept well within the standards (85 dBA) by providing noise control measures including acoustic hoods, silencers, enclosures etc. on all the sources of noise generation. The ambient noise levels should conform to the standards prescribed under EPA Rules ,1989 viz 75 dBA (daytime) and 70 dBA (nighttime)	<ul style="list-style-type: none"> <li>• We are taking all precautionary measures to control noise pollution and ensure that the noise is well within specified limits.</li> <li>• Regular noise level monitoring conducted at project sites and mines area.</li> <li>• Noise level monitoring reports are being submitted to the concerned authority on a monthly basis. Pl. refer annexure no. 25.</li> </ul>
vi	The company shall harvest the rainwater from the roof tops and storm water drains to recharge the ground water. The company must also collect rainwater in the mined-out pits and use the same water for the various activities of the project to conserve fresh water.	<ul style="list-style-type: none"> <li>• Being complied</li> <li>• To harvest rainwater, the company has constructed 53 no of various rainwater harvesting systems with a rainwater harvesting capacity of 16 Lacs M3/year based of 1000 mm yearly rainfall. Pl. refer annexure no. 26.</li> <li>• In future mine out pits will be utilized as a harvesting pit.</li> </ul>
vii	All the recommendations of the CREP guidelines shall be strictly followed.	<ul style="list-style-type: none"> <li>• Noted and being followed.</li> <li>• CREP compliance is enclosed as annexure- 22.</li> </ul>
viii	The project proponent shall also comply with all the environment protection measures and concerned authorities and date of commencing the land development work.	<ul style="list-style-type: none"> <li>• Notes and being complied with.</li> </ul>
ix	The company must undertake socio-economic development activities in the surrounding villages like community development programs, educational programs, drinking water supply and health care etc.	<ul style="list-style-type: none"> <li>• Company is doing its CSR activity for the socio-economic development of nearby 9 Villages.</li> <li>• From April 2025 to September 2025, we have spent a total of Rs 52.03 lakh under CSR in nearby villages. Pl. refer annexure no. 27.</li> </ul>

x	As proposed, Rs.125.00 Crores and Rs.8.00 Crores earmarked towards total capital cost and recurring cost/annum for environmental pollution control measures Rs.1.00 Crores for socio-economic development program shall be used to implement the condition stipulated by the Ministry of Environment and Forests as well as the State Government and an implement schedule for implementing all the conditions stipulated herein shall be submitted to the Regional Office of this Ministry at Bhopal. The fund provided shall not be diverted for any other purpose.	<p><b>We have incurred an expenditure of Rs 127 Crore for the installation of Air pollution control equipment of Recurring expenses for Environmental pollution control measures.</b></p> <p><b>Annual Environmental Expenditure for the last 4 FY is given as below -</b></p> <table><tr><th>Financial year</th><th>Cost / expenses in Crore</th></tr><tr><td>2022-23</td><td>1.20</td></tr><tr><td>2023-24</td><td>2.19</td></tr><tr><td>2024-25</td><td>2.84</td></tr><tr><td>Apr 2025 to Sept. 2025</td><td>1.14</td></tr></table> <ul style="list-style-type: none"><li>• <b>Phase 1 which is under operation with the capacity of 1.98 MTPA clinker and 05 MTPA cement production.</b></li><li>• <b>For the socio-economic development, we have adopted 09 nearby villages and implemented the CSR programs in these villages. Pl. refer annexure no. 27</b></li></ul> <p><b>The details of CSR commitment submitted to MoEF vide letter number b- 1011/3/2008-M&amp;MP Dated 15.02.2010. Pl. refer annexure 28.</b></p>	Financial year	Cost / expenses in Crore	2022-23	1.20	2023-24	2.19	2024-25	2.84	Apr 2025 to Sept. 2025	1.14
Financial year	Cost / expenses in Crore											
2022-23	1.20											
2023-24	2.19											
2024-25	2.84											
Apr 2025 to Sept. 2025	1.14											
xi	The Regional Officer of this Ministry at Bhopal /CPCB /CECB will monitor the stipulated conditions. A six-monthly compliance report and the monitoring data along with statistical interpretation shall be submitted to them regularly.	<ul style="list-style-type: none"><li>• <b>Half yearly EC compliance report is being submitted on regular basis to the regional office of MOEF and CC Raipur, Zonal Office of CPCB Bhopal and CECB Bhilai-Durg.</b></li></ul>										
xii	The Project Proponent shall inform public that the project has been accorded environmental clearance by the Ministry and copies of the clearance letter are available with the CECB /Committee and may also be seen at Website of the Ministry of Environment and Forest at <a href="http://envfor.nic.in">http://envfor.nic.in</a> .This shall be advertised within seven days from the date of issue of the clearance letter at least in two local newspapers that are widely circulated in the region of which one shall be in the vernacular language of the locality concerned and a copy of the same should be forwarded to the Regional office at Bhopal.	<ul style="list-style-type: none"><li>• <b>To inform the public about the accordance of environment Clarence, an advertisement was published in local newspapers and a copy of the same was forwarded to the regional office at Bhopal.</b></li><li>• <b>A copy of the Environment clearance has been also uploaded on the company website.</b></li><li>• <b>Pl. refer Annexure- 29.</b></li></ul>										
xiii	Project authorities shall inform the Regional Office as well as the Ministry of the date of the financial closure and final approval of the project by the concerned authorities and date of commencing. the land development work.	<ul style="list-style-type: none"><li>• <b>The stipulated condition has already complied vide letter no. JKLC/Durg/Env/1206 dated 15.06.2011.</b></li></ul> <p><b>and company is following the year starts from April &amp; ends in March for the financial matter.</b></p>										

**COMPLIANCES OF CONDITION STIPULATED IN ENVIRONMENTAL CLEARANCE AMENDMENT OBTAINED  
FROM MOEF (I.A. Division) vide F. No. J-11011/1170/2007-IA II (I) regarding change of plant location  
dated 27<sup>th</sup> February 2010.**

**(Ref: EC Amendment Dated 27<sup>th</sup> February 2010)**

**(Period- APRIL-2025 to SEP-2025)**

<b>S. No.</b>	<b>CONDITION</b>	<b>COMPLIANCE STATUS</b>
<b>i.</b>	At least 5 % of the total cost of the project (viz.Rs.1100.00 Crores) shall be earmarked towards the corporate social responsibility and item –wise details along with time bound action plan shall be prepared and submitted to the Ministry’s Regional Office at Bhopal .The corporate social responsibility (CSR) facilities shall be extended to all the persons residing in 15 Km instead of 10 Km radius to cover all the villagers of old location also. Implementation of such program shall be ensured accordingly in a time bound manner.	<p><b>Complied</b></p> <ul style="list-style-type: none"> <li>● We are doing CSR activity for the socio-economic development of nearby 09 Villages. Comprehensive details of CSR and item wise details have already been prepared and submitted to the MOEF &amp; CC New Delhi vide our letter no B-11011/3/2008-M-MP dated 15.02.2010. For the period April 2025 to September 2025 we have spent 52.03 lacs towards the CSR activities.</li> <li>● Expenses Details for the period April 2025 to September 2025 is in Annexure- 27.</li> </ul>
<b>ii.</b>	The National Ambient Air Quality Emission Standards issued by the Ministry vide GSR No.826 (E) dated 16 <sup>th</sup> November, 2009 shall be followed.	<ul style="list-style-type: none"> <li>● Complied</li> <li>● Being followed by taking all measures to keep their surrounding ambient air quality as per NAAQs standards.</li> <li>● Pl. refer annexure no. 25.</li> </ul>
<b>iii.</b>	A copy of clearance letter shall be sent by the proponent to concerned Panchayat/Zila Parishad/Municipal Corporation, Urban Local Body and local NGO, if any form whom suggestions/representations, if any received while processing the proposal .The clearance letter shall also be put on the web site of the company by the proponent.	<ul style="list-style-type: none"> <li>● Complied.</li> </ul>
<b>iv.</b>	The project proponent shall upload the status of compliance of the stipulated environment clearance conditions, including results of monitoring data on the website and shall update the same periodically. It shall simultaneously be sent to the Regional Office of the MOEF at Bhopal, the respective Zonal Office of CPCB and the CPCB. The criteria pollutants levels namely: SPM, RSPM, SO <sub>2</sub> , NO <sub>x</sub> (ambient levels as well as stack emissions) or critical sectoral parameters, indicated for the project shall be monitored and	<ul style="list-style-type: none"> <li>● Complied</li> <li>● The Environment Compliance report including monitoring data is being uploaded on the company website along with EC compliance report.</li> <li>● Copy of Half Yearly Environment Compliance report being regularly submitted to Regional Offices, of MoEF &amp; CC –Raipur, CECB-Bhilai and zonal office of CPCB.</li> <li>● Environmental monitoring data is being displayed on the online display board installed at both Plant and mines Gate in public domain</li> </ul>

	displayed at a convenient location near the main gate of the company in the public domain.	<b>and also summary of data uploaded on the Company website as an annexure to EC compliance.</b>
<b>V</b>	The project proponent of compliance in the stipulated environment conditions including results of monitoring data (both in hard copies as well as by e-mail) to the Regional Office of MOEF, the respective Zonal Office of CPCB and SPCB. The Regional Office of this Ministry at Bhopal /CPCB/CECB shall monitor the Stipulated conditions.	<b>Complied</b> <ul style="list-style-type: none"> <li>● <b>Half yearly Monitoring report and results of monitoring data (by e-mail) are being submitted to the Regional Office of MOEF, the respective Zonal Office of CPCB and CECB.</b></li> <li>● <b>Half yearly EC Compliance for the period of October 2024 to March 2025 was submitted on 02<sup>nd</sup> May 2025 at regional office of MoEF&amp;CC and CECB.</b></li> </ul>
<b>Vi.</b>	The Environmental statement for each financial year ending 31 <sup>st</sup> March in Form –V as it mandated to be submitted by the project proponent to the concerned State Pollution Control Board As prescribed under the Environmental (Protection) Rule 1986, as amended subsequently, shall also be put on the web site of the company along with the status of compliance of environmental condition and shall also be sent to the respective Regional Offices of the MOEF by e-mail.	<ul style="list-style-type: none"> <li>● <b>Environment statement report is being submitted to the concern authority on regular basis.</b></li> <li>● <b>Environment statement for last year was submitted on 24.06.2025 at CECB-Raipur and Bhilai.</b></li> <li>● <b>Pl. refer annexure no. 30.</b></li> </ul>
<b>vii.</b>	The Project Proponent shall inform the public that the project has been accordance environmental clearance by the Ministry and copies of the clearance letter are available with the CECB and may also be seen at Website of the Ministry of Environment and Forest at <a href="http://envfor.nic.in">http://envfor.nic.in</a> . This shall be advertised be advertised within seven days from the date of issue of the clearance letter, at least in two local newspapers that are widely circulated in the region of which one shall be in the vernacular language of the locality concerned and a copy of the same should be forwarded to the Regional office at Bhopal.	<ul style="list-style-type: none"> <li>● <b>Noted &amp; Has been complied</b></li> </ul>



**COMPLIANCES OF CONDITION STIPULATED IN ENVIRONMENTAL CLEARANCE AMENDMENT  
OBTAINED FROM MOEF & CC (I.A. DIVISION) VIDE F. NO. J-11011/1170/2007-IA II (I) REGARDING  
CHANGE OF MODE OF LIMESTONE TRANSPORT DATED 23<sup>rd</sup> JULY, 2015.**

<b>Additional Specific Condition</b>		
<b>S No.</b>	<b>CONDITION</b>	<b>COMPLIANCE STATUS</b>
<b>i.</b>	Trucks engaged for limestone transportation shall be optimally loaded and covered with tarpaulin with no spillage on route. The trucks shall be properly maintained and emission shall be below notified limits. Facilities for parking of trucks carrying limestone shall be created within the plant site.	<p><b>Being Complied</b></p> <ul style="list-style-type: none"> <li>• Limestone is being transported in duly-covered vehicles with tarpaulin to avoid fugitive dust emission during transportation. Facilities for parking trucks carrying limestone has also been created within the plant site.</li> </ul> <p>Pl. refer Annexure – 9.</p>
<b>ii.</b>	Vehicular pollution due to transportation of raw material and finished product shall be controlled. Proper arrangement shall also be made to control dust emission during loading, and unloading of the raw material and finished product.	<p><b>Complied</b></p> <ul style="list-style-type: none"> <li>• All transfer points, Junction loading and unloading points are equipped with efficient dust extraction system to maintain the particulate matter below 30mg/Nm<sup>3</sup>.</li> <li>• Dust suppression system (water Sprinkler) is provided at Limes stone unloading point. Pl. refer annexure no. 4(B).</li> <li>• Project proponents have raised Green belt along the length of limestone transportation route to control vehicular pollution. Pl. refer annexure no. 7.</li> <li>• Dust suppression system being installed at all loading unloading points of limestone stacker area.</li> <li>• 02 Water tankers have engaged for water sprinkling on road to control the fugitive dust emission during transportation of limestone from mining pit. Pl. refer annexure no (4B)</li> </ul>
<b>iii.</b>	All approach roads shall be black topped and the internal roads shall be connected. The roads shall be regularly cleaned with mechanical sweepers.	<p><b>Complied</b></p> <p>All internal roads are pucca - Concrete and the roads are being regularly cleaned with mechanical sweeper machines.</p> <p>Pl. refer annexure no. 6.</p>

**COMPLIANCES OF CONDITION STIPULATED IN ENVIRONMENTAL CLEARANCE OBTAINED FROM MOEF (I.A. DIVISION) VIDE F. NO. J-11011/1170/2007-IA II (I), REGARDING EXTENSION OF VALIDITY OF ENVIRONMENT CLEARANCE DATED 4<sup>TH</sup> SEPTEMBER, 2015.**

**(There is no additional conditions mentioned in the EC by the MOEF & CC )**

**As per above said EC as advised by the MOEF&CC officials we are complying with all specific and general conditions stipulated vide EC NO. J-11011/1170/2007-1A. II (I) dated 13.05.2009 and amendment dated 27.02.2010**

**COMPLIANCES OF CONDITION STIPULATED IN ENVIRONMENTAL CLEARANCE OBTAINED FROM MOEF (I.A. DIVISION) VIDE F. NO. J-11011/1170/2007-IA II (I), AMENDMENT IN EC FOR OPENING OF SECOND PIT IN MINE LEASE AREA DATED 07<sup>TH</sup> JUNE 2017.**

**(There is no additional conditions mentioned in the EC by the MOEF & CC )**

**As per above said EC as advised by the MOEF&CC officials we are complying with all specific and general conditions stipulated vide EC NO. J-11011/1170/2007-1A. II (I) dated 13.05.2009 and amendment dated 27.02.2010**

**COMPLIANCES OF CONDITION STIPULATED IN ENVIRONMENTAL CLEARANCE AMENDMENT OBTAINED FROM MOEF & CC (IMPACT ASSESSMENT DIVISION) VIDE F. NO. J-11011/1170/2007-IA II (I) REGARDING REDUCTION OF MINING LEASE AREA FROM 281.339 HA TO 252.105 HA AND INTERCEPTION OF GROUND WATER TABLE DURING MINING OPERATION DATED 20<sup>TH</sup> JULY, 2018.**

**( Period- APRIL 2025 to SEP -2025)**

<b>S No.</b>	<b>CONDITION</b>	<b>COMPLIANCE STATUS</b>
<b>i.</b>	This environmental clearance will not be operational till such time the project proponent complies with all the statutory requirements and judgment of honorable Supreme Court dated the 2nd of Aug 2017 in write petition (Civil) No. 114 of 2014 in the matter of common cause versus union of India and Ors, if any applicable to this project.	<ul style="list-style-type: none"> <li>• <b>Noted and agreed</b></li> </ul>
<b>ii.</b>	The department of mines and geology govt. of Chhattisgarh shall ensure that mining operation shall not commence till the entire compensation levied, if any for illegal mining paid by the project proponent through their respective department of mining geology in strict compliance of judgment of Hon'ble supreme court dated 2nd Aug 2017 in writ petition (Civil) No. 114 of 2014 in the matter of common cause versus union of India and Ors.	<ul style="list-style-type: none"> <li>• <b>Noted and agreed</b></li> </ul>
<b>iii.</b>	The regular monitoring of ground water tables is to be carried out by establishing a network of existing wells and constructing new piezometers. The reports shall be submitted at intervals of six month to the regional office of the ministry and CG Pollution control board.	<ul style="list-style-type: none"> <li>• <b>The Regular Ground water levels monitoring is being carried out at plant site and Mines area. The reports are submitted to the regional office of the ministry and CECB every six months.</b></li> <li>• <b>Ground water monitoring reports along with photographs are attached in Annexure- 31.</b></li> </ul>

IV.	<p>The water balance / water auditing shall be carried out and measures for reducing the consumption of water shall be taken up and reported to the regional office of the ministry and CG Pollution control board.</p>	<p><b>Complied</b></p> <ul style="list-style-type: none"> <li>• <b>Water meters have been installed on all Bore wells for monitoring of ground water withdrawal. Regular monitoring of water consumption on a monthly basis is being carried out.</b></li> <li>• <b>Details of the same are in Annexure- 32</b></li> </ul>
v.	<p>The regular monitoring of water quality upstream and downstream of water bodies shall be carried out and record of monitoring data should be maintained and submitted to the at interval of six months to the regional office of the ministry and CG Pollution control board.</p>	<p><b>Complied</b></p> <ul style="list-style-type: none"> <li>• <b>Regular monitoring of water quality is being done.</b></li> <li>• <b>The ground water quality is being monitored during pre- monsoon and post monsoon and record of monitoring data is being maintained and submitted to the regional office of the ministry and CECB in Half yearly reports</b></li> <li>• <b>Environment monitoring report along with water quality is attached in annexure 33</b></li> </ul>
Vi.	<p>The plantation / greenbelt at the periphery of the water body, particularly on eastern and western boundaries, shall be maintained in the mined-out area in order to reduce the loss of surface water.</p>	<p><b>Complied</b></p> <ul style="list-style-type: none"> <li>• <b>A 3-tier avenue plantation along the roads and along the lease boundary has been done. Local species have been given importance.</b></li> <li>• <b>Companies carried out plantation programs in schools and villages. Saplings are distributed to schools and villages.</b></li> <li>• <b>Pl. refer annexure no.-18</b></li> </ul>



**COMPLIANCES OF CONDITION STIPULATED IN ENVIRONMENTAL CLEARANCE AMENDMENT  
WAS MADE BY MOEF & CC (IMPACT ASSESSMENT DIVISION) VIDE F. NO. J-11011/1170/2007-IA  
II (I) REGARDING CHANGE IN CONFIGURATION OF CLINKER PRODUCTION OF 1.5 MTPA TO 1.98  
MTPA THROUGH UP-GRADATION AND OPTIMIZATION IN PHASE-I UNDER THE PROVISIONS OF  
EIA NOTIFICATION, 2006. DATED 14<sup>TH</sup> NOVEMBER 2018**

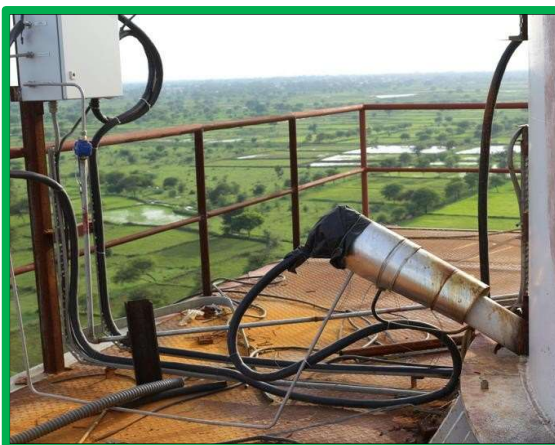
**(Period- APRIL 2025 to SEPTEMBER-2025)**

<b>Sr No .</b>	<b>CONDITION</b>	<b>COMPLIANCE STATUS</b>
<b>i.</b>	The amount of Rs. 15.5 have Lakhs spent towards corporate environmental responsibility as per office memorandum of the ministry dated 30 <sup>th</sup> May 2018 by the end of 2019.	<ul style="list-style-type: none"> <li>• <b>Complied</b> The amount of more than of Rs. 15.5 have Lakhs spendeds towards corporate environmental responsibility . Pl. refer Annexure- 34</li> </ul>
<b>ii.</b>	The air pollution control devices should be upgraded to meet the requirement of additional pollution load and shall meet the standards.	<p><b>Complied</b></p> <ul style="list-style-type: none"> <li>• <b>State of Art Air Pollution Control Equipment has already been installed which has been upgraded by activation of standby chambers/Fields to meet additional pollution load thereby meeting the standards as prescribed.</b></li> <li>• <b>To control NOx emissions, we have installed Selective Non-Catalytic Reduction (SNCR) at Integrated Cement plant. Pl. refer annexure no. - 35</b></li> </ul>
<b>iii.</b>	The proposed configuration of the plant shall be commissioned within the valid period of environment Clearance.	<ul style="list-style-type: none"> <li>• <b>Noted, agreed and complied</b></li> </ul>

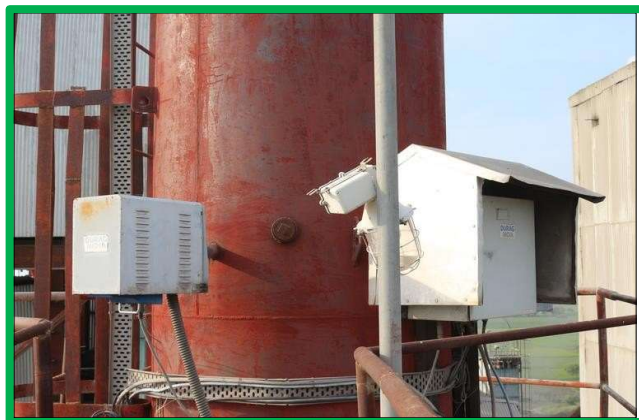
## CEMS and Opacity Meter installed at All major Stacks in Plant



*RABH CEMS and Opacity Meter installed at CPP stack and Server Room*



*CPP CEMS and Opacity Meter installed at CPP stack and Server Room*



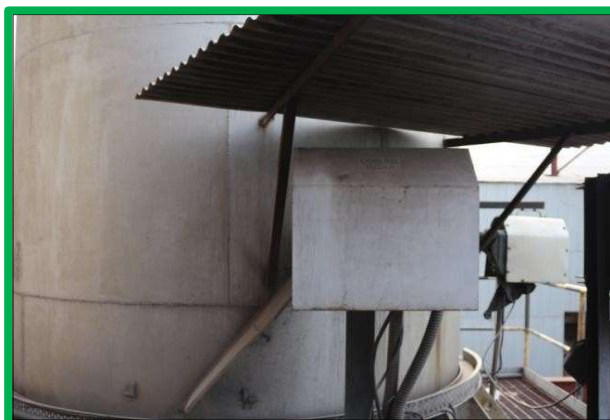
***Cement mill- 1 Opacity Meter***



***Cement Mill-2 Opacity meter***



***RABH Opacity meter***

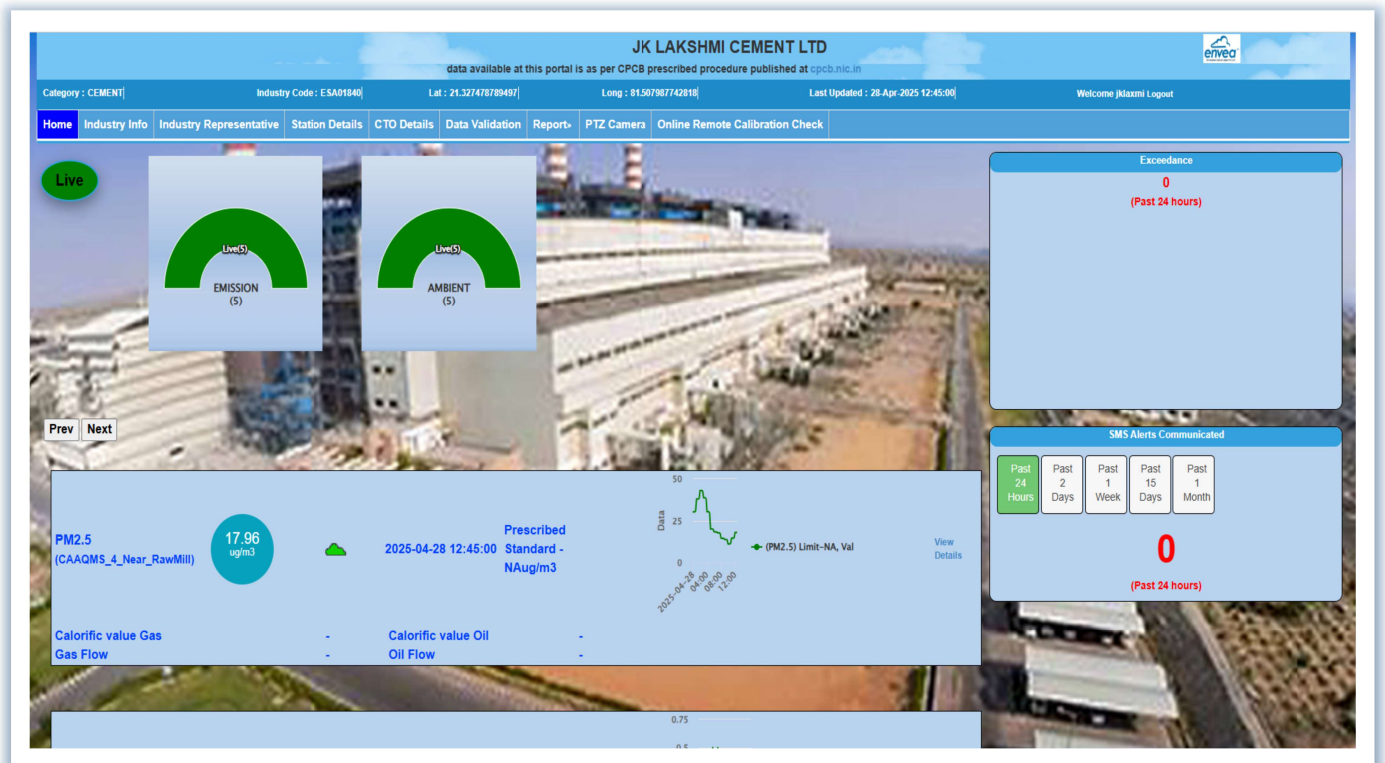
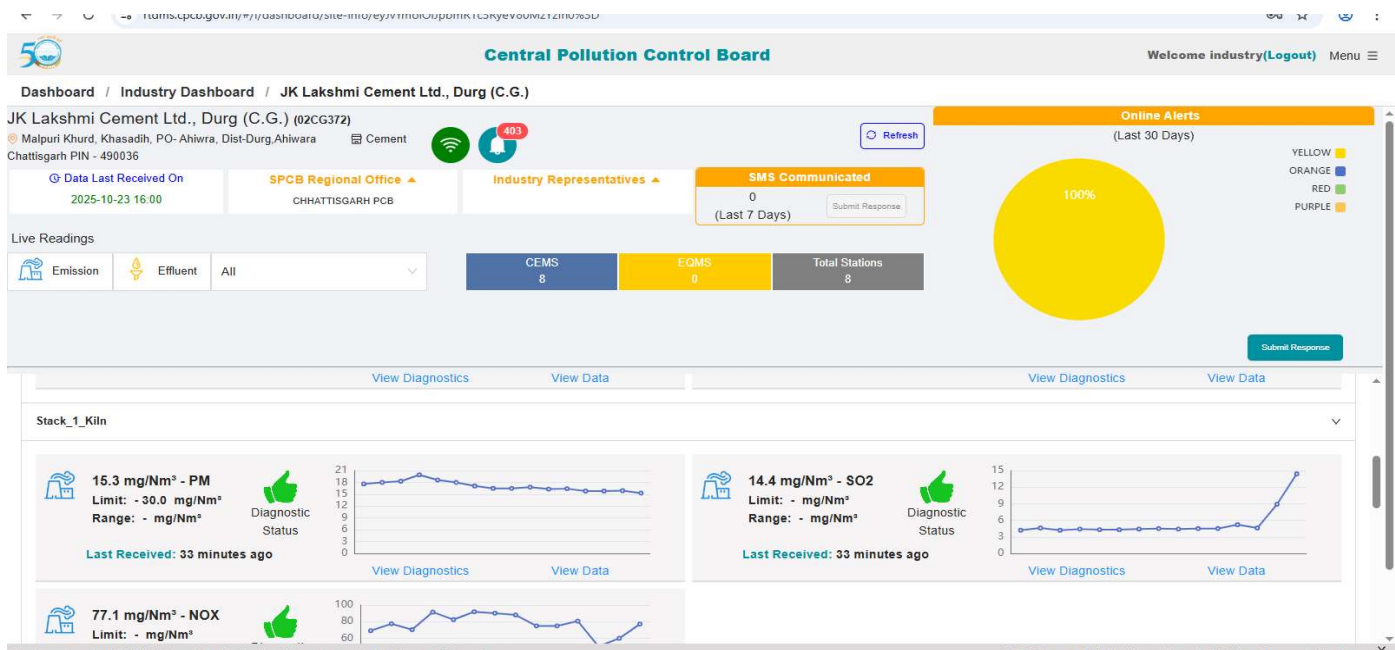


***Coal Mill Opacity Meter***



***Slag mill Opacity Meter***





**A snap of data transmission Continuous Ambient Air Quality Monitoring Systems and Continuous Emission Monitoring Systems**



**ESP connected with Clinker Cooler**

SL. No.	Clinker Cooler ESP Details	
1	Volume Flow	699720 m3/h
2	Gas temperature	343.00 0C
3	Pressure	-133
4	Precipitator Current	800 mA
5	Gas Density	0.542 kg/m3
6	Dust Emission designed for	<30 mg/Nm3

**ESP connected to CFBC Boiler at Captive thermal power plant**



SL. No.	AFBC Boiler ESP Details	
1	Volume Flow	699720 m3/h
2	Gas temperature	343.00 0C
3	Pressure	-133
4	Precipitator Current	800 mA
5	Gas Density	0.542 kg/m3
6	Dust Emission designed for	<30 mg/Nm3

### Reverse Air Bag House



Sr. No	Bag Filter Location	Main RABH
1	Equipment Code	421 BH1
2	No of bags	3648
3	Design Temp	260
4	Bag Type	Woven Fibber Glass with PTFE Membrane
5	Design Volume of bag filter M <sup>3</sup> /hr	893380
6	Diameter (m)	0.292
7	Length (m)	9.347
8	Filtering Area (M <sup>2</sup> )	8.64
9	Air to Cloth Ratio	0.47
10	Dust Emission (mg/Nm <sup>3</sup> )	<30

### Slag Mill Bag house



Sr. No	Bag Filter Location	Slag mill Baghouse
1	Equipment Code	532 BF2
2	No of bags	3200
3	Design Temp	120
4	Bag Type	Polyester Needle Felt
5	Design Volume of bag filter M <sup>3</sup> /hr	513000
6	Diameter (m)	0.127
7	Length (m)	3.35
8	Filtering Area (M <sup>2</sup> )	1.35
9	Air to Cloth Ratio	0.20
10	Dust Emission (mg/Nm <sup>3</sup> )	<30

**Coal Mill Baghouse**





Sr. No	Bag Filter Location	Coal Mill Bag house
1	Equipment Code	481 BF1
2	No of bags	1792
3	Design Temp	80
4	Bag Type	Poly Acrylo nitrile needle
5	Design Volume of bag filter M <sup>3</sup> /hr	220000
6	Diameter (m)	0.152
7	Length (m)	3
8	Filtering Area (M <sup>2</sup> )	1.45
9	Air to Cloth Ratio	1.41
10	Dust Emission (mg/Nm <sup>3</sup> )	<30

**CEMS and Opacity Meter installed at All major Stacks in Plant**



***RABH CEMS and Opacity Meter installed at CPP stack and Server Room***



***CPP CEMS and Opacity Meter installed at CPP stack and Server Room***



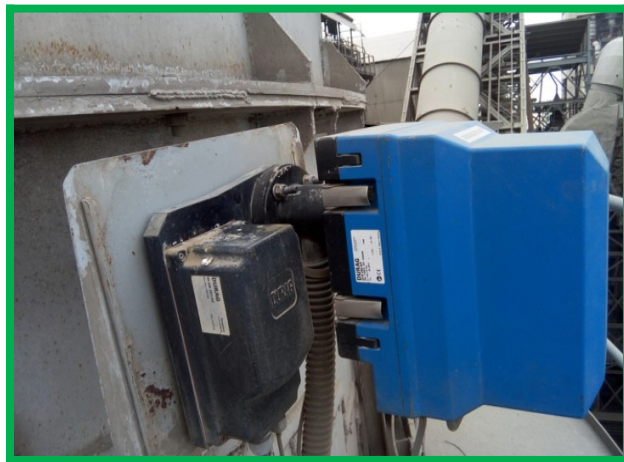
***Cement mill- 1 Opacity Meter***



***Cement Mill-2 Opacity meter***



***ESP Cooler Opacity meter***



***Slag mill Opacity Meter***



***Coal Mill Opacity Meter***

### Air Pollution Control Equipments for Particulate Emission Control:

### Details of Bag House at various locations

[illegible]



Sr. No	Bag Filter Location	Packing Plant					
		Bucket elevator to Packing Plant	Bucket elevator to Packing Plant	For packing Plant	For packing Plant	For packing Plant	For packing Plant
1	Equipment Code	661 BF1	662 BF2	661 BF2	661 BF3	662 BF3	662 BF1
2	No of bags	90	180	252	378	378	90
3	Design Temp	130	130	130	130	130	130
4	Bag Type	Polyester, Nil, Imported, Fabric	Polyester, Nil, Imported, Fabric	Polyester, Nil, Imported, Fabric	Polyester, Nil, Imported, Fabric	Polyester, Nil, Imported, Fabric	Polyester, Nil, Imported, Fabric
5	Design Volume of bag filter M <sup>3</sup> /hr	7500	16000	22000	34000	34000	7500
6	Diameter (m)	0.149	0.149	0.149	0.149	0.149	0.149
7	Length (m)	3.5	3.5	3.5	3.5	3.5	3.5
8	Filtering Area (M <sup>2</sup> )	1.65	1.65	1.65	1.65	1.65	1.65
9	Air to Cloth Ratio	0.84	0.90	0.88	0.91	0.91	0.84
10	Dust Emission (mg/Nm <sup>3</sup> )	<30	<30	<30	<30	<30	<30

**Details of Bag filters Installed at Raw Mill Silo (Storage Silo)**

Sr. No	Bag Filter Location	Raw Mill Silo			
		Silo Feed Air Slide	For Kiln Dust Bin System	Silo Feed Air Slide	Silo Feed Air Slide
1	Equipment Code	391 BF1	391 BF2	391 BF3	391 BF4
2	No of bags	90	60	42	42
3	Design Temp	45	45	45	45
4	Bag Type	Polyster Needle Felt	Polyster Needle Felt	Polyster Needle Felt	Polyster Needle Felt

5	<b>Design Volume of bag filter M<sup>3</sup>/hr</b>	10000	7000	5000	5000
6	<b>Diameter (m)</b>	0.127	0.127	0.127	0.127
7	<b>Length (m)</b>	3.35	3.35	3.35	3.35
8	<b>Filtering Area (M<sup>2</sup>)</b>	1.35	1.35	1.35	1.35
9	<b>Air to Cloth Ratio</b>	1.37	1.44	1.47	1.47
10	<b>Dust Emission (mg/Nm<sup>3</sup>)</b>	<30	<30	<30	<30

### Details of Bag filters Installed at Clinker Silo (Storage Silo)

Sr. No	Bag Filter Location	Clinker Silo Top			
		For Clinker Silo Top	For Clinker Silo Extraction	For Clinker Silo Extraction	For Clinker Silo Extraction
1	Equipment Code	451 BF2	711 BF1	711 BF2	711 BF3
2	No of bags	256	120	120	120
3	Design Temp		150	150	150
4	Bag Type	synthetic polyester	Homo Polymer Acrylic	Homo Polymer Acrylic	Homo Polymer Acrylic
5	Design Volume of bag filter M <sup>3</sup> /hr		10000	10000	10000
6	Diameter (m)	0.152	0.152	0.152	0.152
7	Length (m)	3	3	3	3
8	Filtering Area (M <sup>2</sup> )	1.45	1.45	1.45	1.45
9	Air to Cloth Ratio	0.00	0.96	0.96	0.96
10	Dust Emission (mg/Nm <sup>3</sup> )	<30	<30	<30	<30

### Details of Bag filters Installed at Cement Silo (Storage Silo)

Sr. No	Bag Filter Location	Cement Silo								
		OPC Silo Top	PPC Silo Top	PSC Silo Top	For OPC Silo Extraction	For PPC Silo Extraction	For PSC Silo Extraction	For OPC Silo Feed	For PPC Silo Feed	FOR PADDL E MIXER
1	Equipment Code	591 BF5	591 BF7	591 BF8	611 BF1	613 BF1	614 BF1	591 BF2	591 BF3	611 BF2
2	No of bags	40	40	40	40	40	40	60	60	90
3	Design Temp	130	130	130	130	130	130	130	130	130
		Polyeste r, Nil, Importe	Polyester, Nil, Imported,	Polyester, Nil, Imported,	Polyester, Nil, Imported,	Polyester, Nil, Imported,	Polyester, Nil, Imported,	Polyester, Nil, Imported,	Polyester, Nil, Imported,	Polyester , Nil, Imported

### Details of Bag filters Installed at Clinker Silo (Storage Silo)

[illegible]

### Details of Bag filters Installed at Gypsum storage and Slag Storage

Sr. No	Bag Filter Location	Gypsum Storage		Slag Storage				
		For Dump Hopper	For Gypsum crusher	Slag Silo Top	For Slag Silo Extraction	For Slag Silo Feed	Bucket elevator Discharge	For Slag Hopper
1	Equipment Code	751 BF1	751BF2	591 BF6	612 BF1	591 BF1	532 BF1	512 BF1
2	No of bags	120	120	40	40	60	90	90
3	Design Temp	130	130	130	130	130	45	45
4	Bag Type	Polyster Needle Felt	Polyster Needle Felt	Polyster, Nil, Imported, Fabric	Polyster, Nil, Imported, Fabric	Polyster, Nil, Imported, Fabric	Polyster Needle Felt	Polyster Needle Felt
5	Design Volume of bag filter M <sup>3</sup> /hr	10000	10000	3500	3500	5000	10000	10000
6	Diameter (m)	0.152	0.152	0.149	0.149	0.149	0.127	0.127
7	Length (m)	3	3	3.5	3.5	3.5	3.35	3.35
8	Filtering Area (M <sup>2</sup> )	1.45	1.45	1.65	1.65	1.65	1.35	1.35
9	Air to Cloth Ratio	0.96	0.96	0.88	0.88	0.84	1.37	1.37
10	Dust Emission (mg/Nm <sup>3</sup> )	<30	<30	<30	<30	<30	<30	<30

### Details of Bag filters Installed at Blending Silo (Kiln Feed)

Sr. No	Bag Filter Location	Blending Silo (Raw Mill Feed)				
		PH Top Kiln Feed air Slide	Kiln Feed Silo Top	For Mixing Bin	For SFF	For Kiln Feed Bucket Elevator
1	Equipment Code	411 BF4/351BF410	341 BF1/ 341 BF400	411 BF1/351 BF280	411 BF2/351 BF290	411 BF3 /351BF400
2	No of bags	64	100	64	25	64
3	Bag Type	Synthetic Polyester	Synthetic Polyester	Synthetic Polyester	Synthetic Polyester	Synthetic Polyester

**Details of Bag filters Installed at Gypsum storage and Slag Storage**

4	Design Volume of bag filter M <sup>3</sup> /hr	5000	8000	4500	2000	5000
5	Diameter (m)	0.152	0.152	0.152	0.152	0.152
6	Length (m)	3	3	3	3	3
7	Filtering Area (M <sup>2</sup> )	1.45	1.45	1.45	1.45	1.45
8	Air to Cloth Ratio	0.90	0.92	0.81	0.92	0.90
9	Dust Emission (mg/Nm <sup>3</sup> )	<30	<30	<30	<30	<30

### Details of Bag filters Installed at Material Handling Section, Conveyor Belts and Transfer towers (Raw Material Handling)

Sr. No	Bag Filter Location	Raw Material Handling						
		For Discharge of Pipe conveyor to TT1	For Transfer Tower TT2 (Stacker Belt)	For Transfer Tower TT3 (Reclaimer Belt)	For Raw Material Hopper & (Hopper Feed belt)	For Transfer Tower TT3A (High/low Grade Belt)	For Dump Hopper (Additive Crusher)	For Additive Crusher (TT3B )
1	Equipment Code	221 BF2	221 BF3	311 BF1	311 BF2	311 BF3	231 BF1	231 BF2
2	No of bags	210	120	180	120	60	120	120
3	Design Temp	130	130	130	130	130	130	130
4	Bag Type	Polyster Needle Felt	Polyster Needle Felt	Polyster Needle Felt	Polyster Needle Felt	Polyster Needle Felt	Polyster Needle Felt	Polyster Needle Felt
5	Design Volume of bag filter M <sup>3</sup> /hr	18000	15000	15000	10000	5000	10000	10000
6	Diameter (m)	0.152	0.152	0.152	0.152	0.152	0.152	0.152
7	Length (m)	3	3	3	3	3	3	3
8	Filtering Area (M <sup>2</sup> )	1.45	1.45	1.45	1.45	1.45	1.45	1.45
9	Air to Cloth Ratio	0.99	1.44	0.96	0.96	0.96	0.96	0.96
10	Dust Emission (mg/Nm <sup>3</sup> )	<30	<30	<30	<30	<30	<30	<30

### Details of Bag filters Installed at Material Handling Section, Conveyor Belts and Transfer towers (Coal Handling)

Sr. No	Bag Filter Location	Coal Handling									
		For Coal Dump Hopper	For Transfer Tower (TT4)	For Coal Crusher	For Transfer Tower (TT5)	For Transfer Tower (TT6)	For Transfer Tower (TT7)	For Coal Hopper	For Coal FK Pump	For Coal Bin 1	For Coal Bin 2
1	Equipment Code	511 BF1	511 BF2	511 BF3	521 BF1	521 BF2	521 BF3	481 BF3	481 BF6	531 BF1	531 BF2
2	No of bags	180	88	120	88	88	88	54	54	36	36
3	Design Temp	130	130	130	130	130	130	75	75		
		Pan+SS Wire	Pan+SS Wire	Pan+SS Wire	Pan+SS Wire	Pan+SS Wire	Pan+SS Wire	Polyster Needle	Polyster Needle	Polyster Needle	Polyster Needle

### Details of Bag filters Installed at Material Handling Section, Conveyer Belts and Transfer towers (Raw Material Handling)

[illegible]



## Details of Bag filters Installed at Material Handling Section, Conveyor Belts and Transfer towers (Gypsum Handling)

Sr. No	Bag Filter Location	Gypsum Handling					
		For Transfer Tower (TT9)	For Reclamer and dump Hopper	For Slag Dump Hopper	For Transfer Tower (TT10)	For Transfer Tower (TT11)	For Screen
1	Equipment Code	751 BF7	751 BF6	621 BF1	621BF2	621 BF3	621 BF4
2	No of bags	88	120	180	88	120	180
3	Design Temp	130	130	130	130	130	130
4	Bag Type	Polyster Needle Felt	Polyster Needle Felt	Homo Polymer Acrylic	Homo Polymer Acrylic	Homo Polymer Acrylic	Homo Polymer Needle Felt
5	Design Volume of bag filter M <sup>3</sup> /hr	7500	10000	15000	7500	10000	15000
6	Diameter (m)	0.152	0.152	0.152	0.152	0.152	0.152
7	Length (m)	3	3	3	3	3	3
8	Filtering Area (M <sup>2</sup> )	1.45	1.45	1.45	1.45	1.45	1.45
9	Air to Cloth Ratio	0.98	0.96	0.96	0.98	0.96	0.96
10	Dust Emission (mg/Nm <sup>3</sup> )	<30	<30	<30	<30	<30	<30

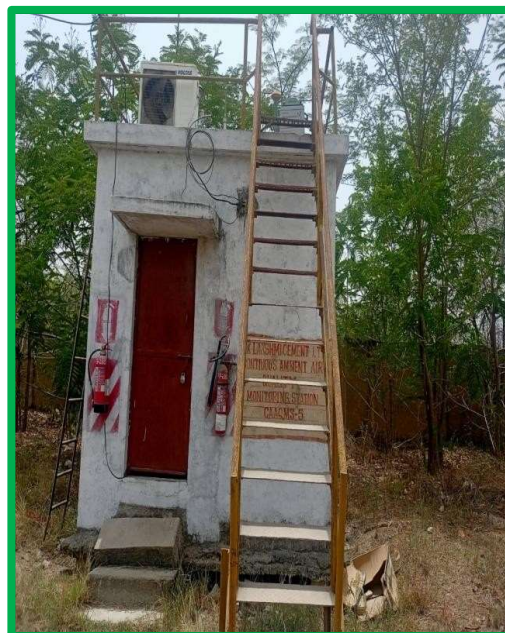
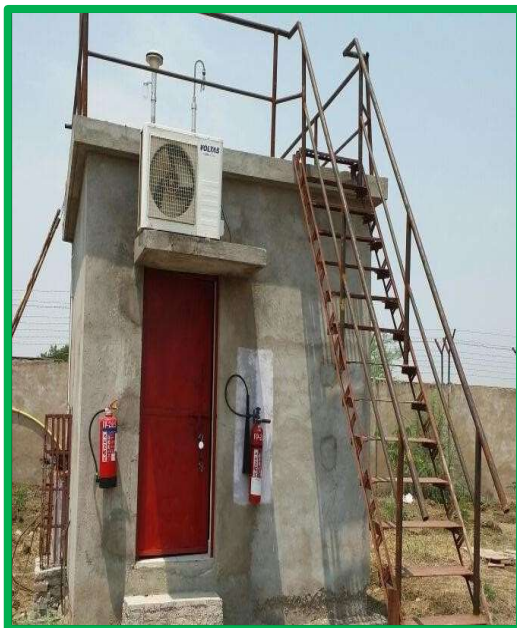
**Online Continuous Ambient Air Quality Monitoring Stations In Mines**



## Online Ambient air quality monitoring stations Within Plant Premises







**Environmental Data Display boards for General public**



***Data Display board at Plant Main gate***



***Data Display board at Mines Main gate***

**Closed Storage Sheds and Silo to store Raw materials and Products**



**Slag Storage Shed: 10000 Tonne**



**Limestone Storage Shed: 50000 Tonne**



**Coal Storage Shed: 10000 Tonne**



**Additives Storage Shed: 15000 Tonn**



**Gypsum Storage shed: 5000 Tonne**



**Clinker Silo: 45000 Tonne**





**Raw meal Silo: 15000**



**Cement Silo: 4×5000 Tonne**

**Water Sprinkling at Material Loading, Unloading points and on Mine Haul roads to Control Fugitive Dust Emissions**





### Mining best Practices



All bench edges are being fenced with rope and Steel pipes to check fall of men during Blast Hole Drilling and Blast Hole charging Operations.



Wet drilling is being practiced regularly to control dust emission



After drilling all drill holes are being plugged with wooden collar cones



Water Sprinkling Systems in conveyor belts



## Environmental Data Display boards for General public



*fig. 01 Data Display board at Plant Main gate*

*Fig . 02Data Display board at Mines Main gate*



**Dust Collection and Extraction system**

*Using 2 sweeping machines, out one of which is Truck mounted and the other is mechanical sweeping machine.*



**Truck Mounted Sweeping Machine**



**Mechanical Sweeping Machine**



**Concrete Roads for Raw material Transportation & Green belt development along with road side.**




***Concrete Roads within Plant Premises & Plantation along with road***



***Concrete roads connecting limestone mine and Plant***

EC amendment facilitate use of low-grade limestone (Mineral Conservation) for blending with high grade limestone to optimize life of mine

		<b><u>By Speed Post/Online</u></b>
<b>No. J-11011/1170/2007-IA.II(I)</b> Government of India <b>Ministry of Environment, Forest and Climate Change</b> Impact Assessment Division ***		
		Indira Paryavaran Bhavan, Aliganj, Jor Bag Road, New Delhi-110 003
		Dated: 20 <sup>th</sup> July, 2018
To,	<b>M/s J.K. Lakshmi Cement Ltd</b> MalpuriKhurd,Khasadih, P.O.Ahirwara District-Durg, Chhattisgarh, Pin-490036	
<b>Sub.: Amendment in EC No. J-11011/1170/2007-IA II(I), dated 13<sup>th</sup> May, 2009 of M/s J K Lakshmi Cement Ltd. w.r.t. reduction of mining lease area from 281.339 ha to 252.105 ha and interception of ground water table during mining operation, located at MalphuriKhurd, Khasdaih, Semaria, Ghikudia, NandiniKhundani Tehsil Dhamdha, District-Durg Chhattisgarh-Amendment in EC regarding</b>		
<b>Reference: Online Proposal no. IA/CG/MIN/71245/2009</b>		
Sir, This has reference to your online proposal for amendment in EC No. J-11011/1170/2007-IA II(I), dated 13 <sup>th</sup> May, 2009 w.r.t. reduction in mine lease area from 281.339ha to 252.105ha and interception of ground water table during mining operation. The mine lease area is located at MalphuriKhurd, Khasdaih, Semaria, Ghikudia, NandiniKhundani Tehsil Dhamdha District-Durg, Chhattisgarh. The mine lease area lies between latitudes North 21° 24' 13.5" ~ 21° 25' 25.0", longitude East 81°23' 40.4" ~ 81°24' 52.9" respectively on the Survey of India topo sheet no. 64-G/7. The Project received online.		
2. The Environmental Clearance was granted by the Ministry vide letter no. J-11011/1170/2007-IA II(I), dated 13 <sup>th</sup> May, 2009 for Integrated Cement Plant (Clinker, 3.0 MTPA, Cement 10.0MTPA), Limestone mine (4.8 MTPA) in mine lease area of 267.695 ha and 281.339 ha respectively and captive power Plant (40MW) at village Semaria, Ghikuria and NandaniKundani, Tehsil-Dhamda, District-Durg, Chhattisgarh. The Ministry, vide letter dated 27.02.2010, 23.07.2015 and 07.06.2017 has amended the Environmental Clearance. Further the Ministry, vide letter dated 4 <sup>th</sup> September, 2015 has extended the period of EC for five years w.e.f. 12.05.2014 by the Industry Sector of IA Division.		
3. Project Proponent reported that due to local problem and issues associated with Nala and Road as well Charagah land acquisition, 29.234ha falling in second Limestone mine (lease area 281.339ha), the said mine lease area has been reduced from 281.339ha to 252.105ha by the Chhattisgarh State Govt. The Department of Mines and		
<b>Amendments in EC No. J-11011/1170/2007-IA.II (I).Dated13.05.2009</b>		<b>Page 1 of 3</b>



## Annexure-9



***Bulkers used for Transporting of Fly ash***



***Tarpaulin covered trucks for transporting of raw material and product***



**Pollution Under Control test within Plant Premises.**

Photographs of Root Zone chamber of Sewage Treatment Plant

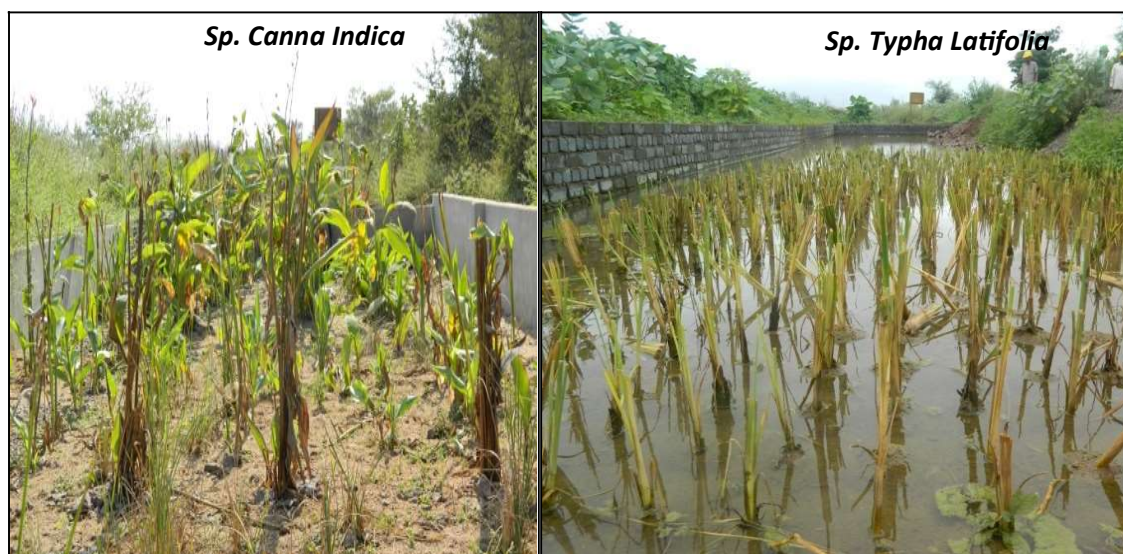
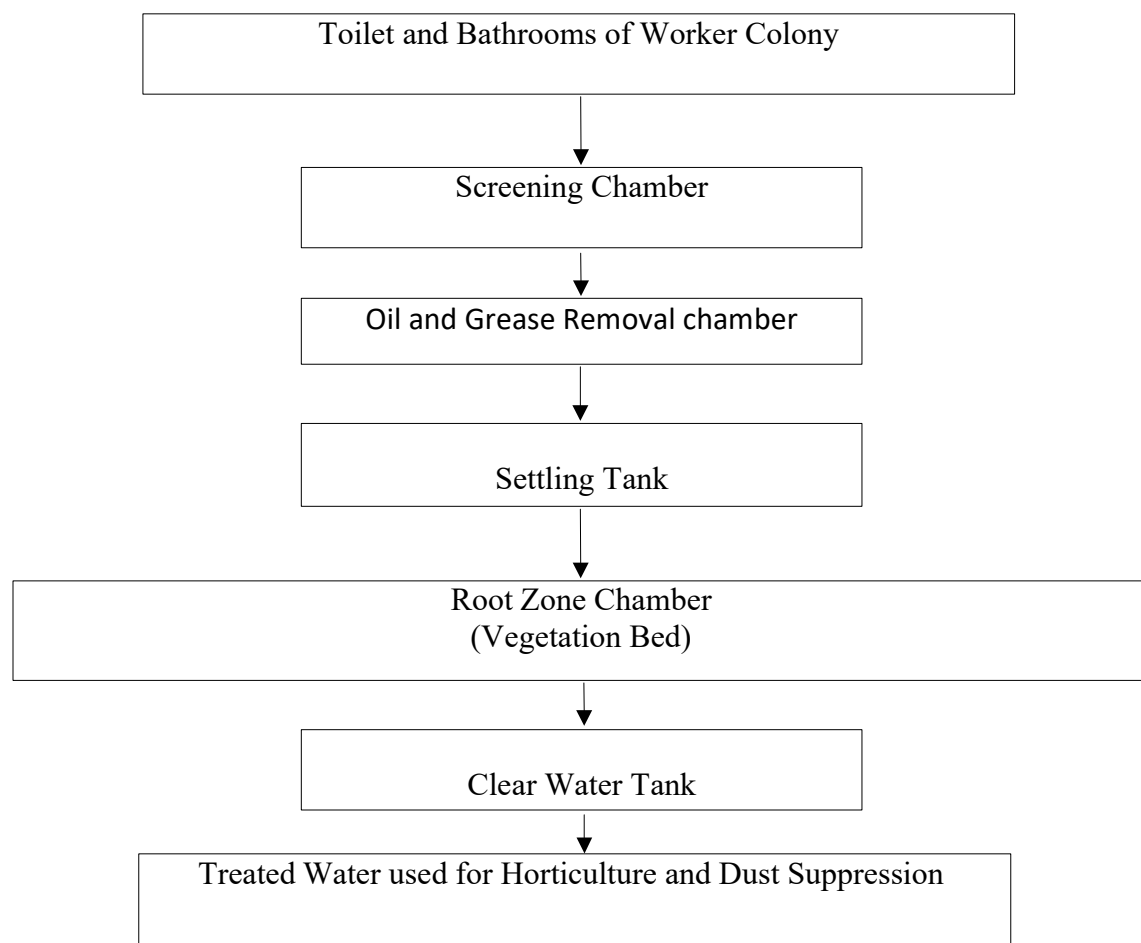


Fig 3: Process Flow Diagram of Sewage Treatment Plant (STP) at workers Colony





***Photographs of Sewage Treatment Plant (STP) during construction phase***



**Photographs of Sewage Treatment Plant (STP)**





**Air Cooled Condensers installed at Captive Power Plant and Waste Heat Recovery unit**



*Air Cooled Condensers installed at Captive Power Plant*



*Air Cooled Condenser installed at Waste Heat Recovery*

**By Speed Post/Online****No. J-11011/1170/2007-IA.II(I)**

Government of India

**Ministry of Environment, Forest and Climate Change**

Impact Assessment Division

\*\*\*

Indira Paryavaran Bhavan,  
Aliganj, Jor Bag Road,  
New Delhi-110 003Dated: 20<sup>th</sup> July, 2018

To,

**M/s J.K. Lakshmi Cement Ltd**  
MalpuriKhurd,Khasadih, P.O.Ahirwara  
District-Durg,  
Chhattisgarh, Pin-490036**Sub.: Amendment in EC No. J-11011/1170/2007-IA II(I), dated 13<sup>th</sup> May, 2009 of M/s J K Lakshmi Cement Ltd. w.r.t. reduction of mining lease area from 281.339 ha to 252.105 ha and interception of ground water table during mining operation, located at MalphuriKhurd, Khasdaih, Semaria, Ghikudia, NandiniKhundani Tehsil Dhamdha, District-Durg Chhattisgarh-Amendment in EC regarding****Reference: Online Proposal no. IA/CG/MIN/71245/2009**

Sir,

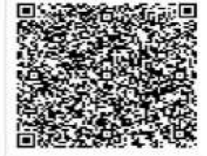
This has reference to your online proposal for amendment in EC No. J-11011/1170/2007-IA II(I), dated 13<sup>th</sup> May, 2009 w.r.t. reduction in mine lease area from 281.339ha to 252.105ha and interception of ground water table during mining operation. The mine lease area is located at MalphuriKhurd, Khasdaih, Semaria, Ghikudia, NandiniKhundani Tehsil Dhamdha District-Durg, Chhattisgarh. The mine lease area lies between latitudes North 21° 24' 13.5" - 21° 25' 25.0", longitude East 81°23' 40.4" - 81°24' 52.9" respectively on the Survey of India topo sheet no. 64-G/7. The Project received online.

2. The Environmental Clearance was granted by the Ministry vide letter no. J-11011/1170/2007-IA II(I), dated 13<sup>th</sup> May, 2009 for Integrated Cement Plant (Clinker, 3.0 MTPA, Cement 10.0MTPA), Limestone mine (4.8 MTPA) in mine lease area of 267.695 ha and 281.339 ha respectively and captive power Plant (40MW) at village Semaria, Ghikuria and NandaniKundani, Tehsil-Dhamda, District-Durg, Chhattisgarh. The Ministry, vide letter dated 27.02.2010, 23.07.2015 and 07.06.2017 has amended the Environmental Clearance. Further the Ministry, vide letter dated 4<sup>th</sup> September, 2015 has extended the period of EC for five years w.e.f. 12.05.2014 by the Industry Sector of IA Division.

3. Project Proponent reported that due to local problem and issues associated with Nala and Road as well Charagah land acquisition, 29.234ha falling in second Limestone mine (lease area 281.339ha), the said mine lease area has been reduced from 281.339ha to 252.105ha by the Chhattisgarh State Govt. The Department of Mines and



भारत सरकार  
जल शक्ति मंत्रालय  
जल संसाधन विभाग,  
केन्द्रीय भूमि जल प्राधिकरण  
GOVERNMENT OF INDIA  
MINISTRY OF JAL SHAKTI  
DEPARTMENT OF WATER RESOURCES,  
RIVER DEVELOPMENT & GANGA REJUVENATION  
CENTRAL GROUND WATER AUTHORITY



भूजल निकासी हेतु अनापत्ति प्रमाण पत्र  
NO OBJECTION CERTIFICATE (NOC) FOR GROUND WATER ABSTRACTION

PROJECT NAME JK Lakshmi Cement Limited	
PROJECT ADDRESS Village – Malpuri Khurd and Khasadih, Tehsil – Dhamdha, District – Durg (C.G.)	PIN CODE 491331
STATE CHHATTISGARH	DISTRICT DURG
TOWN/BLOCK DHAMDHA	
COMMUNICATION ADDRESS 4th Floor, Nehru House, 4 Bahadur Shah Zafar Marg	
ADDRESS OF CGWB REGIONAL OFFICE Reena Apartment, 2nd Floor, NH 43, Dhamtari Road, Panchpedi Naka, Raipur- 492001, Chattisgarh.	
1. NOC NO. NOC/IND/CG/2025/5421/N	2. DATE OF ISSUANCE 22/05/2025
3. APPLICATION NO. IND/CG/2025/5421	4. APPLICATION TYPE Industry
5. PROJECT STATUS New Project	6. NOC TYPE New
7. VALID FROM 22/05/2025	8. VALID UP TO 21/05/2028
9. WATER QUALITY TYPE Fresh Water	10. AREA TYPE CATEGORY Semi Critical ( GWRE - 2024)

11. Ground Water Abstraction Permitted					
GW Abstraction		Dewatering		Total	
m <sup>3</sup> /day	m <sup>3</sup> /year	m <sup>3</sup> /day	m <sup>3</sup> /year	m <sup>3</sup> /day	m <sup>3</sup> /year
301.25	109956.25	0.00	0.00	301.25	109956.25

12. Details of Ground Water Abstraction /Dewatering Structures														
EXISTING 6					PROPOSED 0					TOTAL 6				
DW	DCB	BW	TW	Pu	DW	DCB	BW	TW	Pu	DW	DCB	BW	TW	Pu
0	0	6	0	0	0	0	0	0	0	0	0	6	0	0

\*DW-Dug Well; DCB-Dug-cum-Bore Well; BW-Bore Well; TW-Tube Well; Pu Pumps;

**Validity of this NOC shall be subject to mandatory compliance of the following conditions:**

**Phase I (within 30 days)**

1. Installation of tamper proof digital water flow meter with telemetry on all the abstraction structure(s) is mandatory for all users seeking No Objection Certificate. Intimation regarding their installation shall be updated in Self-Compliance Module (Phase-I) of BhuNeer APP portal within 30 days of grant of No Objection Certificate.

**Phase II (after 11 months)**

1. Proponents shall mandatorily get water flow meter calibrated from an authorized agency once in a year.

छत्तीसगढ़ शासन  
जल संसाधन विभाग  
मंत्रालय  
दाऊ कल्याण सिंह भवन, रायपुर

क्रमांक / एफ 4-165/एस-2/31/औजप्र/2010, रायपुर दिनांक /09/2012  
प्रति,

मुख्य अभियंता,  
महानदी गोदावरी कछार,  
जल संसाधन विभाग,  
रायपुर (छ.ग.).

विषय:- मेसर्स जे.के. लक्ष्मी सीमेंट लि., दुर्ग द्वारा जिला-दुर्ग, ब्लाक-धमधा, ग्राम-नन्दिनी के निकट प्रस्तावित 1.50 एम.टी.पी.ए. सीमेंट संयंत्र एवं 40 मेगावाट कोट्टिव पॉवर प्लांट हेतु शिवनाथ नदी से 1.64 गि.घ.मी. वार्षिक जल आबंटन/प्रदाय की स्वीकृति।

- संदर्भ:- 1. शासन का पत्र क्र.-5561-5562/7/जसं/तशा/औजप्र/01/डी-4, दिनांक 20.07.2012.  
2. का.अ., तांदुल, ज.सं.स. दुर्गा का पत्र क्र.-5247/व.ले.लि., दिनांक 04.08.2012.

उपरोक्त विषय के संदर्भ में राज्य जल संसाधन उपयोग समिति, छत्तीसगढ़ की 31वीं बैठक, दिनांक 18.05.2012 में लिए गए निर्णयानुसार, मेसरर्स जे.के.लक्ष्मी सीमेंट लि., दुर्ग (संस्थान) द्वारा जिला-दुर्ग, ब्लाक-धमधा, ग्राम-नन्दिनी के निकट प्रस्तावित 1.50 MTPA सीमेंट संयंत्र एवम् 40 मेगावाट कोयला पौवन प्लांट एवं 167 शिवनाथ नदी से जल की लक्ष्मी, वार्षिक जल, शिवनाथ नदी में प्रस्तावित सहर्गौव एनीकट से, संस्थान द्वारा अग्रिम प्रस्ताविक के रूप में तथा की जाने वाली समूर्ण/अनुपातिक राशि से जल संसाधन विभाग द्वारा निर्माणा उपरांत जमा विभाग द्वारा लिपित धमधा एनीकट के जल संग्रहण से (ऑफ़केट पाईन्ट-सहर्गौव एनीकट) आबंटन/प्रत्यय की स्वीकृति निम्नालिखित शर्तों के साथ प्रदान की जाती है :-

- 1 प्रकरण में, औद्योगिक/पेयजल उपयोग हेतु जल आबंटन/आरक्षण/स्वीकृति के एवज में कमिटमेंट चार्जर्स बाबत शासन द्वारा जारी परिपत्र दिनांक 20.04.2007 की कड़िका क्रमांक-1 के अनुसार, संस्थान द्वारा कमिटमेंट चार्जर्स रु 41000/- की भुगतान की गई राशि नियमित जल-कर या अन्य किसी राशि में समायोजित नहीं होगी और न ही लापरवाही योग्य होगी।
- 2 संस्थान, शिवनाथ नदी में प्रस्तावित जल संग्रहण संरचना (सहर्षाव एनीकट) के सर्वेक्षण की संपूर्ण/अनुपातिक लागत वहन करेगा। प्रस्तावित जल संरचना के निर्माण कार्य की संपूर्ण/अनुपातिक लागत भी संस्थान वहन करेगा, जिसे संस्थान द्वारा, शासकीय स्त्रोट से निर्धारित जल-दर पर देय जल-कर की राशि में समायोजित किया जा सकेगा। सर्वेक्षण/निर्माण कार्य जल संसाधन विभाग द्वारा किया जायेगा एवं जल संग्रहण संरचना का स्वामित्व जल संसाधन विभाग के पास रहेगा।

- 3 संस्थान, शिवनाथ नदी में जल आहरण हेतु प्रस्तावित जल संग्रहण संरचना (सहगर्व एनोकेट) के निर्धारित स्थल से अपने संबंधित स्थल तक जल ले जाने हेतु आवश्यक व्यवस्था (इंटेकवेल का निर्माण, पाईप लाईन विद्युत आदि) जल संसाधन विभाग के अनुमोदित उपरत स्वयं के व्यय पर करेगा। इसके साथ ही संस्थान को कम से कम 30 दिनों की जल आवश्यकता के अनुकूल जल संग्रहण हेतु अपने संबंधित परिक्षेत्र में बैलेन्सिंग रिजर्वायर (तालाब) का निर्माण अनिवार्य रूप से करना होगा। संस्थान द्वारा बैलेन्सिंग रिजर्वायर (तालाब) में जल संग्रहण, मानसून अर्द्ध के दौरान शिवनाथ नदी में अतिरिक्त जल उपलब्ध होने पर, जल को पम्प करके किया जा सकेगा।
- 4 प्रकरण में प्रदावित जल की मात्रा के माप हेतु इंटेकवेल (पंप हाउस) में मानक जल मानक यंत्र की स्थापना संस्थान को स्वयं के व्यय पर करनी होगी, जिसकी समय-समय पर विभाग द्वारा जांच की जा सकेगी।
- 5 शिवनाथ नदी में प्रस्तावित जल संग्रहण संरचना में डूबान तथा जल ले जाने हेतु पाईप लाईन विद्युत के लिए भू-ऊर्जन एवं संबंधित जो भी समस्या आयेगी उसका निराकरण संस्थान स्वयं के व्यय पर स्वयं करेगा। इसके साथ ही छग. राज्य की आदर्श पुनर्वसि नीति-2007 (यथा संशोधित) का पालन करना अनिवार्य होगा।
- 6 संस्थान द्वारा वास्तविक जल आहरण के आधार पर स्वीकृत जल-मात्रा का आंकलन एवं समीक्षा समय-समय पर शासन द्वारा की जा सकेगी।
- 7 शिवनाथ नदी में जल संग्रहण एवं जल आहरण के प्रस्तावित स्थल के ऊपर एवं नीचे जल उपयोग हेतु जल संसाधन विभाग स्वतंत्र होगा एवं निर्मित की जाने वाली जल संग्रहण संरचना में संस्थान द्वारा वांछित जल के अतिरिक्त जल के उपलब्ध होने पर उसके उपयोग हेतु भी जल संसाधन विभाग स्वतंत्र होगा।
- 8 संस्थान, स्थानीय लोगों के जल उपयोग जैसे पेयजल एवं निस्तार आदि हितों पर किसी प्रकार का प्रतिकूल प्रभाव नहीं डालेगा एवं इसके लिए आवश्यक जल की मात्रा जल संरचनाओं में हमेशा सुरक्षित रखी जायेगी।
- 9 संस्थान, उपयोग के पश्चात अपने संबंधित से निस्सारित जल का रि-साइकलिंग करके इसका उपयोग करेगा एवं छत्तीसगढ़ पर्यावरण संरक्षण मंडल द्वारा निर्धारित मानकों एवं नियमों के अनुसार उपचार कर निस्सारित करेगा, ताकि क्षेत्र में जल प्रदूषण की कोई समस्या उत्पन्न न हो।
- 10 संस्थान को जल का उपयोग प्रारंभ करने के पूर्व विभाग के निर्धारित प्रारूप-7(क) में मुख्य अभियंता, महानदी गोदावरी कछार, जल संसाधन विभाग, रायपुर के निर्देशानुसार / अनुमोदित उपरत अनुबंध करना अनिवार्य होगा।
- 11 संस्थान को शासन द्वारा शासकीय स्त्रोत से औद्योगिक जल उपयोग हेतु समय-समय पर निर्धारित जल-दर पर जल कर एवं कमिटमेंट चार्जस का नियमानुसार भुगतान जल संसाधन विभाग को अनिवार्य रूप से करना होगा एवं कमिटमेंट चार्जस के संबंध में शासन द्वारा जारी परिपत्र दिनांक 20.04.2007 का पालन संस्थान के लिए बंधनकारी होगा।



(याकुब खेस्स)  
उप सचिव  
ल संसाधन विभाग  
मंत्रालय, रायपुर

1. प्रमुख अभियंता, जल संसाधन विभाग, रायपुर को सूचनार्थ अधिषित।
2. अधीक्षक अभियंता, शिवनाथ मण्डल, दुर्ग एवं
3. कार्यपालन अभियंता, तांडुला जल संसाधन संभाग, दुर्ग  
को सूचनार्थ एवं आवश्यक कार्यवाही हेतु अधिषित।
4. उप संचालक, राज्य निवेश प्रोत्साहन बोर्ड, मंत्रालय के पास (रिणुका द्वार), शास्त्री  
छाक, रायपुर को सूचनार्थ अधिषित।
5. प्रबंध रायचल, मेसर्स जे.के. लक्ष्मी सीमेंट लि., बी/ 9, रॉयलग्रीन्स, जुनवाना रोड, बिलाई,  
जिला-दुर्ग (छ.ग.) को उनके पत्र क्रमांक-JKLC/N/P(V)GDCL/11-12, दिनांक 30.12.2011  
के संदर्भ में सूचनार्थ अधिषित।

सहपत्रः— शून्य ।

उप सचिव  
जल संसाधन विभाग  
मंत्रालय, रायपुर



JKLC/DU/ENV/CGWA/08

Date: 06.09.2025

To

The Member Secretary  
Central Ground Water Authority  
CSMRS Campus, Olof Palme Marg  
Sector-3, Hauz Khas,  
New Delhi – 110016

**Sub: Submission of Compliance Report Regarding NOC for Groundwater Abstraction.**

**Ref :**

**1. NOC No. CGWA/NOC/MIN/REN/3/2025/11636**

**2. Application No. 21-4/34/CT/MIN/2008, Project Name: M/s J K Lakshmi Cement Ltd.**

Respected Sir,

With due respect, we are hereby submitting the compliance report in respect of the above-mentioned NOC granted by the Central Ground Water Authority (CGWA).

The Authority had granted permission vide NOC No. CGWA/NOC/MIN/REN/3/2025/11636 dated 19.05.2025, valid from 26.09.2024 to 25.09.2026. The domestic water requirement for the mine is only 18.75 KLD, which is being met through one existing borewell. In addition, 1618 m<sup>3</sup>/day of dewatering takes place from three existing mine pits on account of mining intersecting the water table during operations. The total withdrawal from borewell and mine dewatering shall not exceed 597,413.75 m<sup>3</sup>/year.

It is respectfully submitted that in the said NOC, 320 KLD (116,800 m<sup>3</sup>/year) for domestic usage from seven existing bore wells has been mentioned. This was because earlier, a composite NOC for the mine and cement plant together had been issued. Subsequently, as per the advice of CGWA, a separate application for the industry was submitted, for which a distinct NOC (NOC No. NOC/IND/CG/2025/5421/N, Application No. IND/CG/2025/5421, dated 22.05.2025) has been obtained through the Bhuneer App. Compliance (Phase-I) for the said industry NOC has already been submitted within the stipulated time through the Bhuneer App.

**Admn. Office :** Nehru House, 4, Bahadur Shah Zafar Marg, New Delhi-110 002 Phone : 66001142 / 66001112 Fax : +91-11-23722251, 23722021  
E-mail : jklc.customercare@jklmail.com, Website : www.jklakshmicement.com, CIN : L74999RJ1938PLC019511

**Regd. & Work Office :** Jaykaypuram, Distt.-Sirohi, Rajasthan, Phone : 02971-244409/244410, Fax : 02971-244417, E-mail : lakshmi\_cement@lc.jklmail.com

**Local Address :** Village-Malpuri Khurd, Khasadih, P.O. & Teh.-Ahiwara, Distt.-Durg-490 036 (C.G.), Tele.: 8966902222, 8966903333  
E-mail: jklakshmi@durg.jklmail.com



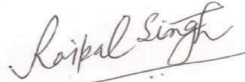
For rectification of the reference to seven borewells in the mine NOC, the firm has already sent an official mail dated 05.07.2025 to CGWA (cgwa@nic.in). Accordingly, for compliance purposes with respect to the mine, only one borewell with a domestic requirement of 18.75 KLD (6,843.75 m<sup>3</sup>/year) is being considered.

We request your kind acceptance of the enclosed compliance submission.

Thanking you,

Yours faithfully,

For, M/s J K Lakshmi Cement Ltd.



**Rajpal Singh**

(Unit Head – Works)

**Cc – Regional Director, Central Ground Water Board, (NCCR) North Centre Chhattisgarh  
Region, Dumartarai, Raipur - 492015**





AFR System for Co- processing of Plastic & hazardous waste material

**AMENDMENT IN EC FOR OPENING OF SECOND PIT**

**By Speed Post/Online**

**No. J-11011/1770/2007-IA.II (I)**  
Government of India  
**Ministry of Environment, Forest and Climate Change**  
Impact Assessment Division  
\*\*\*

Indira Paryavaran Bhavan,  
Aliganj, Jor Bag Road,  
New Delhi-110 003

Dated: 07<sup>th</sup> June, 2017

To,

**M/s J.K. Lakshmi Cement Ltd**  
Malpuri Khurd, Khasadih, P.O.Ahirwara  
District-Durg,  
Chhattisgarh- 490036

**Sub.: Amendments in EC No. J-11011/1170/2007-IA.II (I), dated 13.05.2009 w.r.t. opening of second pit in the MLA of project 'Integrated Cement Plant (Clinker, 3.0 MTPA, Cement 10.0 MTPA), Limestone mine (4.8 MTPA, 267.695 ha and 281.339 ha) and Captive Power Plant (40 MW) by M/s J.K. Lakshmi Cement Ltd., located at Village Semaria, Ghikudia, Nandini-Khundani, Tehsil Dhamda, District Durg, Chhattisgarh –regarding**

**Reference: (i) Online Proposal no. IA/CG/IND/2436/2009**  
**(ii) Environment Clearance vide No. J-11011/1770/2007-IA. II (I) dated 13.05.2009.**

Sir,

This has reference to your online application for amendment in EC vide no. J-11011/1170/2007-IA.II (I) dated 13.05.2009 w.r.t. opening of second pit in mining lease (267.695ha) to facilitate use of low grade limestone (Mineral Conservation) for blending with high grade limestone to optimize life of mines. The total mine lease area is of 267.695ha which is in two Blocks separated by the Seasonal Nala (a) Western block (Block-I)-202.205 hectare and (b) Eastern block (Block-II) 65.490 ha. The mine lease area lies between latitudes North 21o 24' 13.5" – 21o 25' 25.0", longitude East 81o23' 40.4" - 81o24' 52.9" respectively on the Survey of India topo sheet no. 64-G/7. The Project received online.

2. The Environmental Clearance was earlier granted by the Ministry, vide letter no. J-11011/1170/2007-IA.II (I), dated 13.05.2009 for the project 'Integrated Cement Plant (Clinker, 3.0 MTPA, Cement 10.0 MTPA), Limestone mine (4.8 MTPA, 267.695 ha and 281.339 ha) and Captive Power Plant (40 MW). The mine is located at Village Semaria, Ghikudia, Nandini-Khundani, Tehsil Dhamda, District Durg, Chhattisgarh. The Ministry vide letter dated 27.02.2010 and 23.07.2015 has amended the Environmental Clearance. Further the Ministry, vide letter dated 4<sup>th</sup> September, 2015 has extended the period of EC for five years w.e.f. 12.05.2014 by the Industry Sector of IA Division.

3. The proposal of Amendment in EC was earlier considered by the EAC (Non Coal Mining) in its meeting held during September 22-24, 2015. The Project Proponent, *inter-alia*, mentioned that after analysis of the scout holes samples of both block -I & II. Blending ratio of present working pit of block -I & Block-II will be 70:30. The slight variation in blending ratio of Block-II is inevitable as per the ROM quality of Block-I. Opening of 2nd Pit is justified by utilization of low grade mineral which contains high silica and low lime, would

**JK LAKSHMI CEMENT LTD.  
MALPURI KHURD AHIWARA  
Fly Ash Generation and utilization Details FY 2024-25**

<b>FY</b>	<b>Fly Ash Generation (In MT)</b>	<b>Fly Ash utilization (In MT)</b>
<b>2024-25</b>	10468.33	10468.33

Note: - Fly ash generated from captive power plant (20MW) is being 100% utilized in cement manufacturing premises itself.





## Green Belt development at Cement Plant:

*Total 111139 plants have been planted in 79 at plant premises.*



## Greenbelt Development at both Mines:

*Total 233973 plants have been planted in 127.25 Ha.*





***Mines Premises***  
***JKLC In – house Nursery at both Plant and Mines***





**GREEN BELT PHYSICAL VERIFICATION REPORT JK LAKSHMI CEMENT LIMITED.**

**10. Planted Plants Numbers, Survival Plants Numbers and Percentage**

S.No.	Location	Planted Plants No.	Survival Plants No.
1.	Cement Plant Area	108617	110321
2.	Mines Lease Area	193656	184906
3.	CSR ACTIVITY	1700	<b>1570</b>
<b>Total =</b>		<b>303973</b>	<b>296797</b>
<b>All over Percentage -</b>			<b>97.63%</b>

**11. Grading of Plantation :- Grade Card**  
M/s JK Lakshmi Cement Plant Ltd.

**a. Grading of project plantation on scale of 1 to 10**

Qualitative Aspects	Survival	9.8
	Health of Plantation	9.8
	Maintenance	9.6
	Sustainability	9.5

**b. Grading of project plantation on scale 1 to 10**

Overall Grading of Plantation	Outstanding (Excellent) (8<10)	Very Good (5<8)	Good (3<5)	Poor (>3)
	9.67			

**12. Discussion with Management and Staff as Under -**

1. Mr. Sanjay Arora : (Sr. GM - Liasoning & Geology)
2. Mr. Ashok Agnihotri : (Sr. Officer -Environment)

**13. Conclusion and Suggestions :-**

1. A Horticulture Division has been established under the supervision of EMD maintains the plantation on regular basis.
2. Plantation and greenery can be seen all around the plant premises and mines area.
3. The survival rate and the growth of the plantation are excellent.
4. The Horticulture division has developed their own nursery where they prepare new plants.
5. In the plant there are miscellaneous plantation has been carried out according to the availability of land and demand of the site.

## GREEN BELT PHYSICAL VERIFICATION REPORT JK LAKSHMI CEMENT LIMITED.

6. The overall impression of the green belt developed by the Horticulture division of JK Lakshmi Cement Limited seems as they have paid more attention on planting decorative as well as ever green plants. While planting decorative species like palm and evergreen plantation is more preferred than the top canopy plants.
7. The greenery of the plant premise show the zeal and dedication of the Environment Management Department and they should be appreciated for such a good job.

### 14. Pictures of Plantation:







***Plantation by nearby villages and School students under CSR activity***

## Mining best Practices



All bench edges are being fenced with rope and steel pipes to check fall of men during Blast Hole Drilling and Blast Hole charging operations.



Wet drilling is being practiced regularly to control dust emission.





**After drilling all drill holes are being plugged with wooden collar cones.**



**As a dust control measures we have installed Bag houses and Water sprinkling system over conveyor belts.**



**To control dust generation during hauling regular water sprinkling is being done with water tanker**



**Fencing around the reservoir to prevent accidents**



भारत सरकार  
खान मंत्रालय  
भारतीय खान ब्यूरो,  
सेवीय खान नियंत्रक कार्यालय  
द्वितीय तल, जीएनएमएडो पॉलिम प्रबिन्धन बन्द, खानोकार कार्यालय धरिहर,  
पोस्ट-बिजानगर, रामपुर-490005 (छत्तीसगढ़)  
फोन एवं फैक्स-077-2282533, 2280085 ई-मेल- [ro.raipur.bure@buremail.com](mailto:ro.raipur.bure@buremail.com)

रजि. ए.डी./रवीन्द्र पोस्ट

सं. दुर्ग/चूप/खयो-1183/2018-रामपुर/1315.

दिनांक: 09.01.2019

प्रेषित: सर्वश्री जे के लक्ष्मी सीमेंट लिमिटेड,  
ग्राम -मालपुरी खुर्द, खसाडीह,  
पोस्ट - अहिबारा, तहसील- धमधा,  
जिला - दुर्ग, छत्तीसगढ़ - 490036

विषय: खनिज (परमाणु और हाइड्रोकार्बन ऊर्जा खनिजों से भिन्न) रियायत नियम 2016 के नियम 17(2) एवं खनिज संरक्षण एवं विकास नियमावली, 2017 के नियम 23 के अंतर्गत प्रस्तुत निकट ग्राम - सेमरिया, धिकुरिया, एवं नंदनी खुन्डिनी, तहसील - धमधा, जिला - दुर्ग (छग) में स्थित जे के लक्ष्मी सीमेंट चूना पत्थर खान, क्षेत्रफल - 267.695 है की खनन योजना का पुनर्विलोकन सह उत्तरोत्तर खान बंद करने की योजना की प्रस्तुति।

संदर्भ: 1. आगका पत्र दिनांक 05.11.2018 एवं 01.01.2019  
2. इस कार्यालय का समसंख्यक पत्र दिनांक 18.12.2018

महोदय

खान एवं खनिज ( विकास एवं विनियम ) अधिनियम, 1957 की धारा 5 की उपधारा 2 के अनुच्छेद (ख) तथा खनिज (परमाणु और हाइड्रोकार्बन ऊर्जा खनिजों से भिन्न) रियायत नियम 2016 के नियम 16 के उप-नियम 3 एवं नियम 17 संपठित भारत सरकार के आदेश क्रमांक एस.ओ.-1857 (ई) दिनांक 18.05.2016 के द्वारा प्रदत्त अधिकारों का प्रयोग करते हुए मैं एतद्वारा उल्लेखित खनन योजना का पुनर्विलोकन सह उत्तरोत्तर खान बंद करने की योजना का अनुमोदन करता हूँ। यह अनुमोदन निम्नलिखित शर्तों के अधीन हुआ है -

1. इस खनन योजना का पुनर्विलोकन सह उत्तरोत्तर खान बंद करने की योजना का अनुमोदन केन्द्र सरकार अथवा अन्य किसी प्राधिकारी द्वारा खान पर समय-समय पर लागू किए गए कानूनों पर प्रतिकूल प्रभाव डाले बिना किया गया है।
2. दस्तावेज में अध्या प्लेट्स पर दर्शाए गए प्रस्ताव आवेदक/पट्टाधारक द्वारा प्रस्तुत लीज गेप पर आधारित है तथा प्रस्ताव अनुमोदन की दिनांक से लागू है।
3. यह भी स्पष्ट किया जाता है कि इस खनन योजना का पुनर्विलोकन सह उत्तरोत्तर खान बंद करने की योजना के अनुमोदन में खान एवं खनिज (विकास और विनियम) अधिनियम, 1957 या खनिज (परमाणु और हाइड्रोकार्बन ऊर्जा खनिजों से भिन्न) रियायत नियम 2016 या और किसी अन्य कानून जिनमें वन (संरक्षण) अधिनियम, 1980, पर्यावरण संरक्षण अधिनियम, 1986 खान अधिनियम 1952 सहित अन्य किसी कानूनों के किसी अन्य प्रावधान की शर्तों के अनुसार किसी भी प्रकार से सरकार का अनुमोदन समाविष्ट नहीं है।
4. भारतीय खान ब्यूरो ने भूमि पर खनन पट्टे की सीमा का सत्यापन नहीं किया है अतः आवेदक/पट्टाधारक द्वारा प्रस्तुत प्रिसाइज ऐरिया की सीमाओं की सत्यता के संबंध में कोई जिम्मेदारी नहीं ली जाती है।
5. किसी भी अवस्था में यदि यह देखा जाता है कि खनन योजना में दी गई सूचना या दिनांक

सं. दुर्ग/चूप/खयो-1183/2018-रामपुर

आपका पत्र जारी/ISSUED

14/1/19

- असत्य अथवा तथ्यों को मिसरिप्रजेंट करती है तो खनन योजना का पुनर्विलोकन सह उत्तराखण्ड खान बंद करने की योजना का अनुमोदन तुरन्त प्रभाव से वापस लेना माना जाएगा।
- 6 यह अनुमोदन वित्तीय वर्ष 2019-20 से 2023-24 के प्रस्तावों के लिए दिया गया है।
- 7 वित्तीय आरक्षण की अवधि दिनांक 31.03.2024 को समाप्त हो रही है। अवधि समाप्ति की दिनांक को अथवा उससे पहले नई वित्तीय आरक्षण क्षेत्रीय खान नियंत्रक, भारतीय खान ब्यूरो, रायपुर को प्रस्तुत किया जाएगा।

संलग्न अनुमोदित खनन योजना का पुनर्विलोकन सह उत्तराखण्ड खान बंद करने की योजना

क्षेत्रीय

Att  
9/11/2019

( बी एल, गुर्जर )  
क्षेत्रीय खान नियंत्रक  
भारतीय खान ब्यूरो

0/c

प्रतिलिपि -

1. खान नियंत्रक (क्षेत्रीय), भारतीय खान ब्यूरो, रायपुर।
2. संचालक, भूमिगत एवं खनिकर्म, छत्तीसगढ़, इंदरकी नवन, द्वितीय तल, डी ब्लॉक, केपिटल कॉम्प्लेक्स, नया रायपुर, छत्तीसगढ़ को अनुमोदित खनन योजना का पुनर्विलोकन की प्रति के साथ प्रेषित है।
3. निदेशक, खान सुरक्षा निदेशालय, सरोज विहार, खामतरई, बिलासपुर, छत्तीसगढ़ - 495006।
4. श्री शल्लभ साहू, एच.आर्.जी - 21, हुडको कॉलोनी, आमडी नगर बिलाई, जिला दुर्ग - 490009 (छग)।
5. खान पत्रावली।

Att  
9/11/2019

क्षेत्रीय खान नियंत्रक  
भारतीय खान ब्यूरो

0/c





The necessary Personal Protective Equipment (PPEs) has already been provided to the employees and workers.



**COMPLIANCE TO THE RECOMMENDATIONS MENTIONED IN THE CREP GUIDELINES  
FOR CEMENT PLANT**

SN.	CREP CONDITION	ACTION PLANNED
1	Cement plant, which are not complying with notified standards, shall do the following to meet the standards: Augmentation of existing Air pollution Control Devices - by July 2003.  *No compliance units shall submit bank guarantee equivalent to 10% value of Pollution Control Equipment required.	Company is adopting efficient pollution control device to control particulate matters below the prescribed limits. We have installed bag filter as air pollution control (APC) equipment in plant to comply the notified standards.  Regular monitoring of ambient air quality is being practiced.
2	Cement plants located in critically polluted or urban areas( including 5 Km distance outside urban boundary) will meet 100 mg/Nm <sup>3</sup> limit of particulate matter by December 2004 and continue working to reduce the emission of particulate matter 50 mg/Nm <sup>3</sup> .	<b>Not Applicable for us.</b>  <b>Latest standard is being followed.</b>
3	The new cement kiln to be accorded NOC/ Environmental Clearance w.e.f 1/4/03 will meet the limit of 50 mg/Nm <sup>3</sup> for particulate matter emission.	<ul style="list-style-type: none"> <li>• <b>Efficient bag Filters and All Pollution Control Equipments designed to meet the limit of 30 mg/Nm<sup>3</sup> for particulate matter emission are installed at various dust prone areas.</b></li> </ul>
4	CPCB will evolve load-based standards by December 2003.	<ul style="list-style-type: none"> <li>- <b>We installed equipment with latest technology to comply all standards prescribe by CPCB.</b></li> </ul>
5	CPCB and NCBM will evolve SO <sub>2</sub> and Nox emission standards by June -2004	<ul style="list-style-type: none"> <li>- <b>We installed equipment with latest technology to comply all standards prescribe by CPCB.</b></li> </ul>
6	The cement industries will control fugitive emission from all raw material and product storage and transfer points by December 2003. However, the National Task Force will decide the feasibility for the control of fugitive emission from limestone and coal storage areas. The NTF shall submit its recommendations within months.	<ul style="list-style-type: none"> <li>• <b>Efficient dust extraction systems (Bag filters) are installed at all transfer points covering work of transfer points, conveyors, Crushing plants, Material handling units, materials storage area, storage silos, and Electrostatic precipitator (ESP) for clinker are installed. Photographs of the same are enclosed as annexure - A</b></li> <li>• <b>Storage shades are constructed for storage of raw materials, silos are constructed for the storage of Clinker, Fly Ash and Cement etc.</b></li> </ul>
7	CPCB, NCBM, BIS and Oil refineries will jointly prepare the policy on use of petroleum cock as fuel in Cement Kiln by July 2003.	<ul style="list-style-type: none"> <li>• <b>Noted</b></li> </ul>

8	After performance evaluation of various types of continuous monitoring equipment and feedback from the industries and equipment manufacturers, NTF will decide feasible unit operation/section for installation of continuous monitoring equipment. The industry will install the continuous monitoring system (CMS) BY December 2003.	<ul style="list-style-type: none"> <li>• <b>Continuous SPM emission monitors on all major stacks are already installed.</b></li> </ul>
9	Tripping in Kiln to be minimized by July 2003 as per the recommendation on NTF	<ul style="list-style-type: none"> <li>• <b>Noted</b></li> </ul>
10	Industries will submit the target date to enhance the utilization of waste material by April 2003.	<p><b>We are utilizing solid waste material like fly ash in cement manufacturing.</b></p> <p><b>Reports are being submitted to the concerned authority from time to time.</b></p>
11	NCBM will carry out a study on hazardous waste utilization in cement kiln by December 2003.	<ul style="list-style-type: none"> <li>• <b>Noted</b></li> </ul>
12	Cement industries will carry out feasible study and submit target dates to CPCB co-generation of power by July-2003.	<ul style="list-style-type: none"> <li>• <b>Point dropped by the NTF. However, JKLCL shall look into the possibility of co-generation of power through waste gases.</b></li> </ul>

**Amendment for change in configuration of clinker production from 1.5 MTPA to 1.98 MTPA through up-gradation and optimization in phase 1.**

**F. No. J-11011/1170/2007-IA. II(I)**  
**Government of India**  
Ministry of Environment, Forest and Climate Change  
(Impact Assessment Division)

Indira Paryavaran Bhawan  
Jor Bagh Road, Aliganj,  
New Delhi – 110003

E-mail: sharath.kr@gov.in  
Tel: 011-24695319

Dated: 26<sup>th</sup> November, 2018  
14/11

To

**Shri D.K. Mehta,**  
**Senior Vice President - Works,**  
**M/s. JK Lakshmi Cement Limited,**  
**Malpuri Khurd Village, District Durg,**  
**Chhattisgarh.**

**Subject: Integrated Cement Plant [Clinker 3.00 MTPA; Cement: 10.0 MTPA  
CPP: 40 MW; WHRB: 8 MW] and Lime Stone Mine [4.8 MTPA,  
267.695 Ha and 252.105 Ha] at Malpuri Khurd Village, Dist. Durg,  
Chhattisgarh by M/s. JK Lakshmi Cement Limited - Amendment  
in Environmental Clearance for change in configuration of Clinker  
production of 1.5 MTPA to 1.98 TPA through Up-gradation and  
Optimization in Phase-I under the provisions of EIA Notification,  
2006.**

Sir,

This has reference to your application vide online proposal No. IA/CG/IND/75581/2018 dated 26<sup>th</sup> June, 2018 seeking amendment in Environmental Clearance for change in configuration of Clinker production of 1.5 Million TPA to 1.98 Million TPA through Up-gradation and Optimization in Phase-I under the provisions of EIA Notification, 2006.

**Details of the project as per the submission of Project Proponent:**

2.0 Environmental Clearance for the existing Cement Plant was issued vide letter No. J-11011/1170/2007-IA.II(I) dated 13<sup>th</sup> May, 2009 and corrected/modified copy issued by Ministry vide its letter of even No. dated 27<sup>th</sup> February, 2010 in the name of M/s. JK Lakshmi Cement Limited for Integrated Cement Plant [Clinker 3.0 MTPA; Cement: 10.0 MTPA], Lime Stone Mine [4.8 MTPA, 267.695 Ha and 252.105 Ha] and Captive Power Plant 40 MW at Malpuri Khurd Village, Dist. Durg, Chhattisgarh which consists of Phase-I and Phase-II. The validity of the environmental clearance was extended up to 12.5.2019 vide letter No. J-11011/1170/2007-IA.II(I) dated 4<sup>th</sup> September, 2015.



**Water sprinklers all around the coal stockpiles to control fugitive dust emission.**



o/c

**JK LAKSHMI**  
**CEMENT LTD.**


JKLC/DURG/ENV/CECB/HO-06

Dated: - 03.10.2025

To,  
 Member Secretary  
 Chhattisgarh Environment Conservation Board,  
 Paryawas Bhavan, North Block Sector-19,  
 Atal Nagar, Raipur (C.G.) 492002

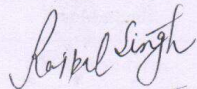
Sub: Submission of Monthly Environment Monitoring Report for the Month of September -2025.

Sir,  
 With reference to aforesaid, we are submitting herewith monthly Environment Monitoring Report for the month of September 2025 for our Integrated Cement Plant (Clinker – 1.98 MTPA, Cement – 5.0 MTPA, WHR - 10 MW), Captive Power Plant (20 MW) situated at Malpuri Khurd, Khasadih and for Lime Stone Mines (Lease Area ML-1, 267.695 Ha., ML-2, 252.105 Ha. and ML-3, 3.096 Ha.) at Villages –Semaria, Ghikuriya, Nandini-Khundini, P.O. Ahiwara, Tehsil Dhamdha, Dist Durg (CG).

This is for your kind information and record Please.

Thanking you

Yours Faithfully  
 For JK LAKSHMI CEMENT LTD.



Rajpal Singh  
 Plant Head (Works)



Encl.: As above

CC: Regional Officer – Chhattisgarh Environment Conservation Board, 5/32 Bungalow Bhilai,  
 Dist. – Durg (C.G.)



Admn. Office : Nehru House, 4, Bahadur Shah Zafar Marg, New Delhi - 110 002 Phone : 66001142 / 66001112 Fax : +91-11-23722251, 23722021  
 E-mail : jkic.customercare@jklmail.com, Website : www.jklakshmi.com, Regd. Office : Jaykaypuram, Distt.-Sirohi, Rajasthan, Phone : 02971-244410, Fax : 02971-244417, E-mail : lakshmi\_cement@lc.jklmail.com  
 Regd. & Work Office : Jaykaypuram, Distt.-Sirohi, Rajasthan, Phone : 02971-244410, Fax : 02971-244417, E-mail : lakshmi\_cement@lc.jklmail.com  
 Local Address : Village-Malpuri Khurd, Khasadih, P.O. & Teh.-Ahiwara, Distt.-Durg-491 036 (C.G.), Tele.: 8966902222, 8966903333





### Rain water harvesting structures

Our integrated approach to harvest Rainwater, company has constructed 53 rainwater harvesting systems with a rain water harvesting potential of 1659782.0 m<sup>3</sup>/year @ rainfall of 960 mm. Apart from this company has constructed 6 rainwater harvesting structures in nearby villages, to recharge Rainwater.





**CSR Activities undertaken**

<b>CSR Budget /Expenses for the FY 2025-26</b>					
<b>Area of Operation as per Schedule VII</b>	<b>Sub-Head</b>	<b>Activity</b>	<b>Budget/Expenses for FY 2025-26 In (Lacs)</b>	<b>Expenses Apr. 25 – Sep. 25 in (Lacs)</b>	<b>Brief Detail</b>
Eradicating Hunger, Poverty and Malnutrition promoting Preventive Health Care & Sanitation and making available Safe Drinking Water	<b>Health Care</b>	Free Health Camp (Arogya Project)	24.06	11.51	Free health camp at 09 nearby villages under the CSR Activities.
	<b>Swajal and swachhata project</b>	<b>Hygiene and Sanitation</b>	22.9	13.59	1. Pond deepening work at Ahiwara (Gothan) village. 2. Through irrigation project, the mine water was made available through water pipeline to the villagers in the mine area. 3. Garbage management at nearby villages. 4. Safe Drinking Water 5. Water Tanker Tractor to solve the drinking water problem in Nandini Khundini Village
Promoting Education including special education the differently abled.	<b>Education</b>	<b>Vidaya Project</b> 1. Infrastructure support to school. 2. JK Lakshmi Vidaya Scholarship. 3. Coaching/tuition classes.	18.41	7.37	1.Expenses of Community library with Rent charges 2. NMMSE Coaching 3. Navodaya Coaching, Prayash Residential School, NTS Shreshtha Coaching 4. NEET and Vyapam Coaching
Employment especially among children, Women, Elderly and Livelihood enhancement projects Empowerments and livelihood  &	<b>Livelihood Intervention &amp; Vocational Skills</b>	JK LAKSHMI AAJIVIKA PROJECT SHG Formation for creating Livelihood opportunities	19.7	5.09	1. Honorarium of 6 trainer of tailoring centre and rent charges 2. Support to Entrepreneurship development. 3. Computer training , E-learning programs , Sumner classes , vocational training , Youth Pratibha Coaching , 4. Animal welfare at nearby villages
	<b>Animal Welfare</b>				



Ensuring environmental sustainability, ecological balance, protection of flora and fauna animal welfare, agroforestry, conversation of natural resources and maintain quality of soil, air and water.	<b>Community Development / Gramin Vikash Project</b>	Infrastructure support and irrigation facilities at nearby villages of Mines area	17.7	14.47	<ol style="list-style-type: none"> <li>1. Work of fixing tiles for 3 rooms in Ahiwara Government Community Health Centre.</li> <li>2. Painting work for Panchayat Bhawan Girhola Village.</li> <li>3. Murom was laid on the unpaved roads of Malpuri and Sandi villages..</li> <li>4. Support to 09 nearby Village for village Level Cultural Activities.</li> </ol>
<b>Total Expenses</b>			<b>102.77</b>	<b>52.03</b>	



**Tuition/Coaching Classes**



**Computer training**



**Skill Development program Youth Empowerment**



**GARBAGE MANAGE**



**Fogging activity to control mosquitoes in nearby 9 villages**



**Free Medical camps and Medicine is being Distributed in nearby 9 villages.**



**Silai - Kadhai Trainings**



**JK LAKSHMI**  
CEMENT Ltd.



Ref: B-11011/3/2008-M&MP

Date: 15.02.10

To

**The Director (IA Division),**  
Ministry of Environment & Forest,  
Government of India,  
Paryavaran Bhavan, CGO Complex,  
Lodhi Road  
New Delhi- 110003

RECEIVED  
17/2/10  
Ministry of Env. & Forests  
CGO Complex, Lodhi Road  
New Delhi-110003

Kind attn : **Dr. P.B. Rastogi**  
(Director)

**Sub: Proposed Integrated Cement Project :** Clinker production-3.0 MTPA, Cement production 10.0 MTPA; Captive Power Plant 40 MW & Limestone Mines (267.695 ha & 281.339 ha) at Village Semaria, Ghikuria, Nandani Kundani, Malpuri Khurd & Khasadih, District Durg, Chattisgarh by M/s J K Lakshmi Cement Ltd.

Ref: MoEF F.No. J-11011/1170/2007-IA II (I)

Respected Sir,

This has reference to the aforesaid subject & discussions held during 7<sup>th</sup> Meeting of the EAC (Industry-I) held on 3<sup>rd</sup> February, 2010 (item 6.2); we here by commit that out of the total project cost which is estimated to be Rs. 1100 Crore, around 5% of the actual cost of the project (in case if it fluctuates to the estimated cost) will be spent on the CSR Activities, for the development in the nearby villages in the project life (detailed as Annexure I).

Kindly consider our case & grant Environment Clearance for the same at your earliest.

Thanking you and with regards,

Yours faithfully,

For M/s JK Lakshmi Cement Ltd.

(V.K. Mittal)  
Sr. V.P (M&MP).



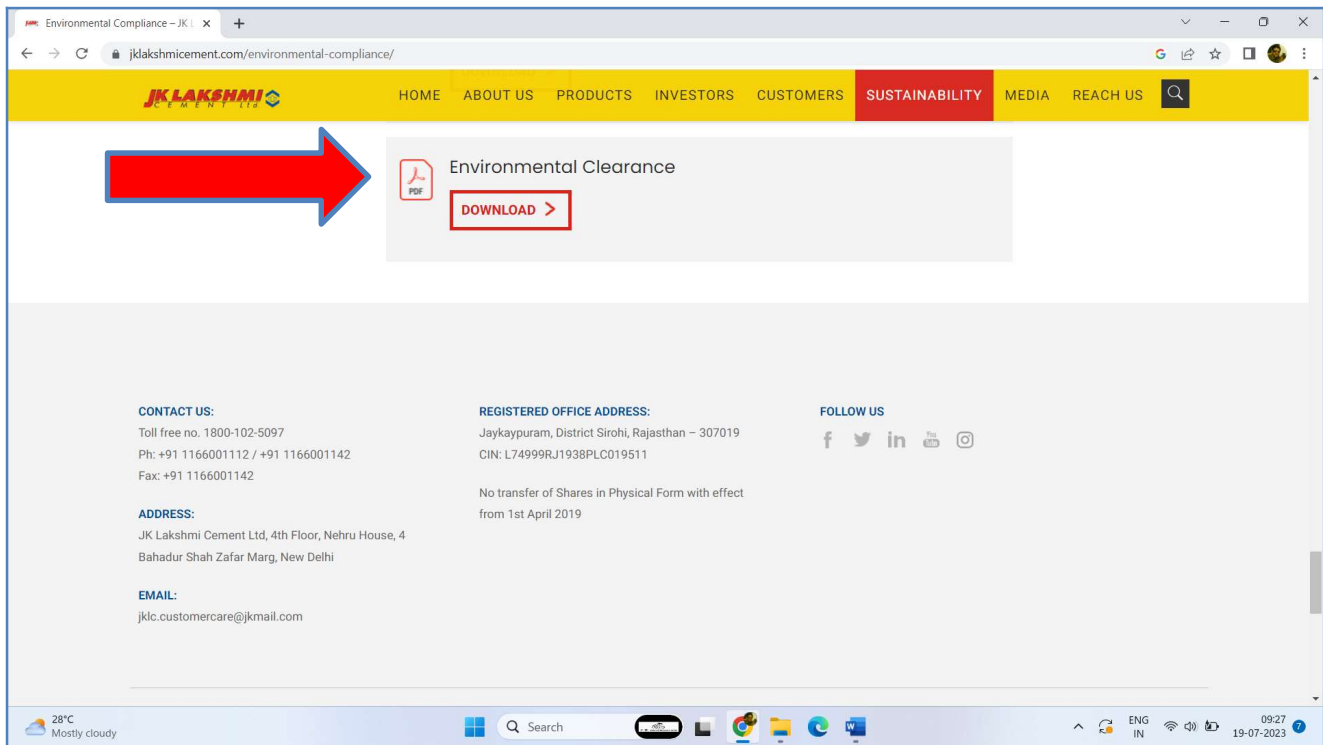
Admin. Office: Nehru House, 4, Bahadur Shah Zafar Marg, New Delhi 110002; Phone: 41011116, 23311112/ 13/ 14/ 15; Fax: 91-011-23722251/ 23722021;  
E-Mail: [info@jklakshmi.com](mailto:info@jklakshmi.com); Website: [jklakshmi.com](http://jklakshmi.com)  
Regd. & Works Office: Jaykaypuram, Distt. Sirohi, Rajasthan; Phone: 02975-242257/242258; Fax: 02975-244417; E-Mail: [lakshmi\\_cement@jklakshmi.com](mailto:lakshmi_cement@jklakshmi.com)

**JK LAKSHMI**

**JK LAKSHMIPLAST**  
A LAKSHMI GROUP COMPANY

**JK LAKSHMI**  
READY MIX CONCRETE

## Annexure -29



*Copy of EC uploaded on Company website*



Advt. in Amrit Sandesh, Raipur edition  
3rd June, 2009

10.00 लाख, धरोहर राशि- रु. 7,500.00 प्रति कार्य। प्रपत्र का मूल्य रु. 500.00। कार्य पूर्ण करने की अवधि 3 माह (तर्मा त्रुल सहित) एवं 3 वर्ष तक रख रखाव करना अनिवार्य। कोरे निविदा प्रपत्र एवं अन्य जानकारी निविदा तिथि से एक दिन पूर्व तक कार्यालयीन समय में संभाग-1 कबीर नगर, रायपुर से प्राप्त की जा सकती है।  
संवाद-38226

कार्यपालन अभियंता

## सूचना

सर्व साधारण को सूचित किया जाता है कि मे. जे.के. लक्ष्मी सीमेंट लिमिटेड द्वारा ग्राम सेमरिया, धिक्कुडिया एवं नंदीनी खुदनी जिला दुर्ग (छग) में प्रस्तावित ईटीग्रेटेड सीमेंट प्रोजेक्ट बिलकर उत्पादन 3.0 एम टी पी ए, सीमेंट उत्पादन 10.0 एम टी पी ए केप्टिव पावर प्लांट 40 मेगावाट एवं लाईम स्टोन माइंस (267.695 हेक्टेयर एवं 281.339 हेक्टेयर) की पर्यावरणीय स्वीकृति पत्र क्र. F No. J.11011/ 1170/ 2007-1A11 (1) दिनांक 13 मई-09 के द्वारा जे के लक्ष्मी सीमेंट लिमिटेड हुआ है। पर्यावरणीय स्वीकृति पत्र की प्रति मुख्यालय छत्तीसगढ़ पर्यावरण संरक्षण मंडल, 1 तिलक नगर, शिव मंदिर चौक, मेन रोड, अवन्ति विहार रायपुर (छग) और पर्यावरण एवं वन मंत्रालय की वेबसाइट <http://envfor.nic.in> में देखी जा सकती है।

सूचनार्थ

जे के लक्ष्मी सीमेंट लिमिटेड

4 नेहरु हाऊस बहादुरशाह जफर मार्ग नई दिल्ली

## छत्तीसगढ़ राज्य विद्युत वितरण कम्पनी मर्यादित (छ.रा.वि.म. उत्तरवारी कम्पनी)

कै. 10-12/सामान्य/1670

रायपुर, दिनांक 02.06.09

### आम सूचना

छत्तीसगढ़ राज्य विद्युत वितरण कंपनी मर्यादित, रायपुर संभाग रायपुर के अंतर्गत आने वाले समस्त सामान्य विद्युत उपभोक्ताओं को सूचित किया जाता है कि: माह मई 09 के विद्युत देयक का वितरण किया जा रहा है, तथा अधिकांश क्षेत्रों के विद्युत देयक का वितरण किया जा चुका है। उन क्षेत्रों का समूह क्षेत्र एवं भूभाग की अंतिम तिथि का विवरण नीचे दिया जा रहा है। जिस किसी उपभोक्ताओं को विद्युत देयक प्राप्त नहीं हुए है, उनसे निर्दिष्ट है कि वे रायपुर संभाग परियोजना के दस्तावेज कार्यालय से दुप्लिकेट बिल प्राप्त कर देयक का भुगतान कर सकते हैं।

क्र.	संस्थित क्षेत्र	समूह	भुगतान की अवधि	संविदा
01	टिकरापारा, विद्याम चौक, नेहरू नगर, किलापरा, गंधारपारा, आर.डी.ए. कॉलोनी, छत्तीसगढ़ नगर, पंच नगर, लक्ष्मी नगर, संजय नगर, सुदामा नगर क्षेत्र,	02	05.06.09	08.06.09
02	ईदगाह भाटा, आधम, उमगाता बस्ती, केचन गंगा, राखीपुरम, कुकरकड़ा, रायपुरा, राशि विहार कॉलोनी, दोनघाट उपमहानगर, गुना मट्टी, मावड़ी जालान, नया साखवा आदि।	03	05.06.09	08.06.09
03	सरोज	18	05.06.09	08.06.09
04	गंडा पारा, वेगवान, नैमिष नदी, तेलगाड़ी भाटा, केलकर पारा, खेयान रोड, गीतली, एम.डी. रोड, रायपुरा चौक	04	08.06.09	11.06.09
05	शारदा चौक, फूल चौक, नवीन मजदूर, तात्यापारा, जगहर नगर, बुडी लाईन, एडमंड रोड, गोल पारा, कण्डला मार्केट, हलवाई लाईन, संजय मंदिर, तेलीपारा	06	08.06.09	11.06.09
06	महजुली, राशि बाजार रोड, बुडा पारा, नवनीलि बिल्डिंग, दोनघाट नदी, राम शाखा रोड, तटुधानी चौक, हनुमान मंदिर	16	08.06.09	11.06.09
07	सातपुर	19	08.06.09	11.06.09

अवधिगत सूचना

- अनुचित रूप से कार्य करी, बिल का भुगतान न करें। समस्त के आभूत 3 श्रेणी के अधिकृत बैंक अकाउंट में ही भुगतान कर सुनिश्चित प्राप्त करें।
- माननीय उपभोक्ताओं से निर्दिष्ट है कि आवश्यकतानुसार अपने मीटर की रीडिंग स्वयं कार्यालय में वाकल-बी ध्यान प्राप्त कर सकते हैं।
- उपरोक्त द्वारा बिल राशि का भुगतान कर दिये जाने से ही जो बिजली देयक को रकम देना शुरू कर सकते हैं।

सूचित एवं सार्वजनिक में विस्तृत की जा सकती है।

Advt. in JANSTA, Raipur edition  
7th June, 2009

## पर्यावरण दिवस पर वन विभाग ने रैली निकाली

धमतरी, 6 जून (जनसत्ता)। विश्व पर्यावरण दिवस के रूप में मनाया जाता है। वनमंडलाधिकारी वनमंडल धमतरी के के ब्रिसेन के कुशल निर्देशन पर पूरे राज्य से आये सम्मानित वन प्रबंधन समितियों के सदस्यों, पदाधिकारियों एवं वन कर्मचारियों की उपस्थिति में बिलाई माता स्थित परिक्षेत्र कार्यालय धमतरी से रैली के रूप में शहर से प्रमुख मार्ग से होते हुए सिहावा चौक स्थित वनमंडल कार्यालय में सभा के रूप में विरचित हुआ। रैली में उपस्थित लोगों को उप वनमंडलाधिकारी, अरुण तिवारी द्वारा विश्व पर्यावरण दिवस की महत्ता को प्रतिपादित करते हुए विश्व के साथ स्थानीय स्तर पर प्रदूषित हो रहे वातावरण को दूर करने हेतु अपने स्तर पर सार्थक प्रयास करने का आह्वान किया गया। रैली को परिक्षेत्र अधिकारी आनंद कुंदरया द्वारा खाना किया एवं रैली का नेतृत्व एच.एन.एल. मीडिया प्रभारी शंकर सिंह वर्मा ने किया।

## भोजन, आवास व सफाई को लेकर डाइट प्रशिक्षणार्थी उग्र

नगरी, 6 जून (जनसत्ता)। डाइट नगरी द्वारा आयोजित शिक्षकों के प्रशिक्षण शिविर में व्याप्त अव्यवस्थाओं को लेकर प्रशिक्षणार्थी शिक्षकों ने व्यवस्था के खिलाफ जमकर नारेबाजी करते हुए प्रशिक्षण कार्यक्रम का बहिष्कार कर दिया। इस प्रदर्शन की किसी को उम्मीद नहीं थी। ज्ञात हो कि डाइट प्रशिक्षण संस्थान में कई वर्षों से धमतरी जिले के सभी चारों विकासखंड के शिक्षकों को आवासीय प्रशिक्षण उपलब्ध कराया जा रहा है। इस समय नगरी में शिक्षकों को शिक्षा की गुणवत्ता पर आधारित प्रशिक्षण देने का कार्य चल रहा है। जिसमें 165 शिक्षक हिस्सा ले रहे हैं। शुरुआत की सवेरे शिक्षकों का

आक्रोश फूट पड़ा प्रशिक्षण के आये लोगों ने बताया कि उन्हें सराहीन भोजन, आवास स्थल सामान न होना तथा शौच, स्नान आदि के लिए काफी परेशानी हो रही है। पीने के लिए पानी शुद्ध नहीं मिल रहा है। वहीं 165 शिक्षकों के लिए सिर्फ पांच नंग ग्लास ही उपलब्ध है। इन शिक्षकों ने आरोप लगाया कि 4 जून को 20 प्रशिक्षणार्थियों को भोजन तक नहीं मिला था। प्रशिक्षण प्राप्त करने वाले शिक्षकों में योगेश कुमार, भागुराम, हेमलाल चंद्रकर, बी.एल. बंजारा, श्रीराम साहू, सी.आर. साहू, रमेश टंडन, एच.आर. गंगवार, अशोक देवान आदि ने बताया कि कल से प्रशिक्षण का बहिष्कार कर दिया है।

## न्यायालय तहसीलदार नजूल, दुर्ग

रामा.क्र.पंजीकृत-अपजीकृत, अ-74, वर्ष 2008-2009

### उद्घोषणा

एल.द्वारा सर्वसाधारण को सूचित किया जाता है कि संस्था अध्यक्ष विरेन्द्रनाथ दीक्षित के द्वारा ग्राम पुलगांव प.ह.न. 25 की शासकीय भूमि शीट नं. प्लाट नं. खसरा नं. 45 खसबा 0.089 में से 0.089 हे. चासजमीन की मांग सामाजिक भवन प्रयोजनार्थ शासन से की है। प्रकरण में दिनांक 01.07.09 तक आपत्तिदाता आमंत्रित है। आज दिनांक 01.06.09 को मेरे सील तथा हस्ताक्षर से जारी किया गया।

सील तहसीलदार, नजूल दुर्ग

## आम सूचना

सर्व साधारण को सूचित किया जाता है कि मे.जे.के. लक्ष्मी सीमेंट लिमिटेड द्वारा ग्राम सेमरिया, धिक्कुडिया एवं नंदीनी खुदनी जिला दुर्ग (छग) में प्रस्तावित ईटीग्रेटेड सीमेंट प्रोजेक्ट बिलकर उत्पादन 3.0 एम टी पी ए, सीमेंट उत्पादन 10.0 एम टी पी ए, केप्टिव पावर प्लांट 40 मेगावाट एवं लाईम स्टोन माइंस (267.695 हेक्टेयर एवं 281.339 हेक्टेयर) की पर्यावरणीय स्वीकृति पत्र क्र. F No. J.11011/ 1170/ 2007-1A11 (1) को दिनांक 13 मई 2009 के द्वारा जे.के. लक्ष्मी सीमेंट लिमिटेड प्राप्त हुआ है। पर्यावरणीय स्वीकृति पत्र की प्रति मुख्यालय छत्तीसगढ़ पर्यावरण संरक्षण मंडल, 1-तिलक नगर, शिव मंदिर चौक, मेन रोड, अवन्ति विहार, रायपुर (छग) और पर्यावरण एवं वन मंत्रालय की वेबसाइट <http://envfor.nic.in> में देखी जा सकती है।

सूचनार्थ

जे.के. लक्ष्मी सीमेंट लिमिटेड

4, नेहरु हाऊस, बहादुर शाह जफर मार्ग, नई दिल्ली



**सूचना**

सर्वसाधारण को सूचित किया जाता है कि मे. जे. के. लक्ष्मी सीमेंट लिमिटेड को संशोधित पर्यावरणीय स्वीकृति ग्राम सेमरिया, धिकुडिया नंदनी-खुंदनी, मलपुरी खुर्द एवं खासाडीह तहसील-धमधा, जिला-दुर्ग में प्रस्तावित इंटीग्रेटेड सीमेंट प्रोजेक्ट (क्लिकर उत्पादन 3MTPA सीमेंट उत्पादन 10MTPA), केप्टिव पावर प्लांट 40 मेगावाट एवं लाइम स्टोन माइन्स (267.695 हेक्टेयर एवं 281.339 हेक्टे.) को पत्र क्रमांक 1.No.J. 11011/1170/2007-1A 11(1) दिनांक 27.02.2010 को प्राप्त हुई है।

उपरोक्त पर्यावरणीय स्वीकृति पत्र की प्रति, मुख्यालय छत्तीसगढ़ पर्यावरण संरक्षण मंडल 1 तिलक नगर, शिव मंदिर चौक, मेन रोड, अवन्ति विहार रायपुर (छ.ग.) और पर्यावरण एवं वन मंत्रालय की वेबसाइट <http://envfor.nic.in> में देखी जा सकती है।

**सूचनार्थ**  
**जे.के.लक्ष्मी सीमेंट लिमिटेड**  
 4, नेहरू हाउस बहादुर साह जफर मार्ग  
 नई दिल्ली

16th Nov - 2010  
 Chattisgarh

<p><b>कार्यालय, रायपुर विकास प्राधिकरण, रायपुर (छ.ग.)</b>  <b>उद्घोषणा</b>          क्रमांक 6777/रा.शा./आर.सी./027/राविप्रा/2010          रायपुर दिनांक 9.11.2010</p> <p>प्राधिकरण की शैलेन्द्र नगर योजनांतर्गत श्रीमती जमुना देवी गुप्ता के नाम पर मकान क्रमांक LIG-E-53, 30 वर्षीय पट्टे पर धारित है। आर्बिटरी की मृत्यु हो जाने के कारण उक्त मकान के नामांतरण उनके पुत्र पुरुषोत्तम लाल गुप्ता के नाम पर किये जाने हेतु वसीयतनामा कार्यालय में प्रस्तुत किया गया है।</p> <p>उक्त नामांतरण किये जाने में यदि किसी को कोई आपत्ति/दावा होवे तो नांक 16.11.10 तक अधोहस्ताक्षरकर्ता के पक्ष उपस्थित होकर प्रस्तुत कर सकते हैं। निर्धारित अवधि में कोई आपत्ति/दावा प्रस्तुत न होने पर प्रचलित नियमों के अनुसार आवेदन का निराकरण कर दिया जावेगा। जिसके बाद कोई आपत्ति/दावा ग्राह्य नहीं होगा।</p> <p><b>राजस्व अधिकारी (तह.)</b>  <b>रायपुर विकास प्राधिकरण</b>  <b>रायपुर (छ.ग.)</b></p>	<p>आपत्ति हो तो वे स्वयं या अपने अभिभाषक के माध्यम से अपनी लिखित आपत्ति दिनांक 25.11.2010 को इस न्यायालय में पेश करें। समयावधि के बाद प्राप्त दावा/आपत्ति पर कोई विचार नहीं किया जावेगा।</p> <p>आज दिनांक 10.11.2010 को मेरे हस्ताक्षर एवं न्यायालय की मुहर से जारी किया गया।</p> <p><b>मुहर</b></p> <p style="text-align: center;"><b>तहसीलदार</b>  <b>रायपुर (छ.शासन)</b></p>	<p>की कार्यवाही में भाग नहीं लेना चाहते। ऐसी दशा में आपके खिलाफ एकपक्षीय कार्यवाही की जाएगी।</p> <p>यदि उक्त पेशी दिनांक 8.12.10 को किसी कारणवश इस न्यायालय का कामकाज बंद रहता है तो इस प्रकरण की सुनवाई पेशी दिनांक ... के पश्चात् अगली कार्य दिवस पर प्रातः 11.00 बजे होगी।</p> <p>मेरे हस्ताक्षर और अदालत की मुद्रा की आज दिनांक 30.10.10 को जारी।</p> <p><b>मुहर</b></p> <p style="text-align: center;"><b>डी.के.तिवारी</b>  <b>प्रधान न्यायाधीश</b>  <b>कुटुम्ब न्यायालय, दुर्ग (छ.ग.)</b></p>
<p><b>सूचना</b></p> <p>सर्वसाधारण को सूचित किया जाता है कि मे. जे. के. लक्ष्मी सीमेंट लिमिटेड को संशोधित पर्यावरणीय स्वीकृति ग्राम सेमरिया, धिकुडिया नंदनी-खुंदनी, मलपुरी खुर्द एवं खासाडीह तहसील-धमधा, जिला-दुर्ग में प्रस्तावित इंटीग्रेटेड सीमेंट प्रोजेक्ट (क्लिकर उत्पादन-3MTPA, सीमेंट उत्पादन 10MTPA), केप्टिव पावर प्लांट 40 मेगावाट एवं लाइम स्टोन माइन्स (267.695 हेक्टेयर एवं 281.339 हेक्टे.) को पत्र क्रमांक <b>F.No.J. 11011/1170/2007-1A</b> 11 (1) दिनांक 27.2.2010 को प्राप्त हुई है। उपरोक्त पर्यावरणीय स्वीकृति पत्र की प्रति, मुख्यालय छत्तीसगढ़ पर्यावरण संरक्षण मंडल, 1 तिलक नगर, शिव मंदिर चौक, मेन रोड, अवन्ति विहार रायपुर (छ.ग.) और पर्यावरण एवं वन मंत्रालय की वेबसाइट <a href="http://envfor.nic.in">http://envfor.nic.in</a> में देखी जा सकती है।</p> <p><b>सूचनार्थ</b>  <b>जे.के. लक्ष्मी सीमेंट लिमिटेड</b>          4, नेहरू हाउस बहादुर साह जफर मार्ग          नई दिल्ली</p>		

16th Nov. 2010  
 Amit Sandesh





JKLC/DU/ENV/ENST-11/2025-26/2

Dated: 24.06.2025

To,

Member Secretary  
Chhattisgarh Environment Conservation board  
Paryawas Bhawan, North Block, Sector-19,  
Atal Nagar Dist-Raipur (C.G)- 492002

Subject: Submission of Environmental Statement Report (Form-V) for the year 2024-25.

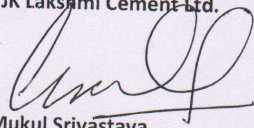
Sir,

We are submitting herewith "Environmental Statement report (Form-V)" for our Integrated Cement Plant (Clinker – 1.98 MTPA, Cement – 5.0 MTPA, WHR - 10 MW), Captive Power Plant (20 MW), and for Lime Stone Mines (Lease Area ML-1, 267.695 Ha. and ML-2, 252.105 Ha.) for the financial year 2024-25 ending 31<sup>st</sup> March 2025.

This is for your kind Record and perusal please.

Yours Faithfully

For JK Lakshmi Cement Ltd.

  
Mukul Srivastava  
(Sr. Vice President-Works)

Encl: Environmental Statement Report (Form- V)

CC: Regional Officer- Chhattisgarh Environment Conservation Board, 5/32 Bungalow, Bhilai,  
Dist.-Durg, C.G





Piezometer installed to measure Ground water Level .

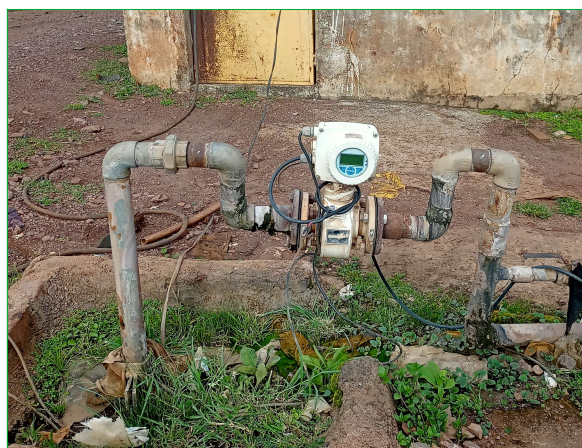




## **Ground Water Level Monitoring Report (April 2025 to September 2025)**

LOCATION	PZ.NO.	Apr 2025	May 2025	June 2025	July 2025	Aug. 2025	Sept. 2025
		W.L. in meter	W.L. in meter	W.L. in meter	W.L. in meter	W.L. in meter	W.L. in meter
<b>Plant Area - East</b>	PZ1	12.9	13.8	15.2	16.1	8.5	7.1
<b>Plant Area -Laxmi Vatika</b>	PZ2	16.6	17	16.8	17.4	4.6	3.2
<b>Plant Area -Malpuri Gate Boundry</b>	PZ3	10.4	11.9	13.7	15.6	6.3	6.3
<b>Plant Area -North Side Boundry</b>	PZ4	14.2	15.6	16.2	16.9	8.4	5.1
<b>Mines Area -Ramp Side</b>	PZ1	5.7	5.8	6.3	6	0.4	0.4
<b>Mines Area -Semaria Village Boundry</b>	PZ2	11.8	12.5	13.7	14.9	6.7	5.2
<b>Mines Area -Hardi Village Boundry</b>	PZ3	13.3	14.9	16.8	18.4	10.2	10
<b>Mines Area -Nandini Khundani Village Boundry</b>	PZ4	12.2	13.8	14.3	15.7	3.5	4

**Water meters installed to assess Water withdrawal at our Plant & Mines**



JK Lakshmi Cement Ltd. durg																														
	Malpuri khurd Khasadih Ahiwara Distt. Durg CG																													
	Ambient Air Monitoring report April to Sep.- 2025 (plant area)																													
Stations	PM10 (<10 µm) µg/m3						PM2.5(<2.5 µm)						So2_ µg/m3						Nox_ µg/m3						CO_ mg/m3					
	Apr25	May25	Jun25	Jul25	Aug25	Sep25	Apr25	May25	Jun25	Jul25	Aug25	Sep25	Apr25	May25	Jun25	July	Aug25	Sep25	Apr25	May25	Jun25	July	Aug25	Sep25	Apr25	May25	Jun25	July	Aug25	Sep25
Near Main Gate	70.1	75.57	69.66	77.94	62.37	75.46	35.3	37.16	34.04	45.18	30.42	39.77	10.1	13.71	14.86	15.07	12.61	17.19	20.2	21.77	22.75	24.39	18.7	25.37	0.274	0.338	0.37	0.451	0.298	0.426
Coal Dump Yard	85.7	81.9	73.87	69.57	70.42	77.31	42.7	42.32	35.21	41.33	35.23	40.25	13.7	17.23	15.33	17.23	18.31	12.38	27	28.83	26.55	25.06	25.39	22.24	0.326	0.41	0.45	0.387	0.345	0.364
Railway Siding	79.4	74.7	68.93	63.21	58.3	60.53	39.6	37.9	33.27	38.6	25.4	26.71	9.9	11.6	12.26	14.8	20.72	12.54	19.3	20.8	19.17	24.88	27.63	23.28	0.275	0.37	0.41	0.41	0.275	0.346
Clinker Yard	81.8	61.3	80.81	82.62	76.22	73.61	40.8	30.1	40.22	47.21	31.45	29.36	11.8	10.9	13.67	19.5	15.31	14.85	21.4	18.8	21.72	25.73	22.41	24.67	0.222	0.28	0.36	0.325	0.421	0.418
CPCB standars	100 µg/m3 (24 Hours)						60 µg/m3 (24 Hours)						80 µg/m3 (24 Hours)						80 µg/m3 (24 Hours)						4.0 mg/m3 (1 Hours)					



JK Lakshmi Cement Ltd. durg																														
Malpuri Khurd Khasadhi Ahiwara Durg Cg																														
Ambient Air report April to Sep.- 2025 (Mines area)																														
Stations	PM10 (<10 µm) µg/m3					PM2.5 (<2.5 µm) µg/m³					SO2 µg/m³					Nox µg/m³					CO mg/m³									
For Mining Lease-1 ( 267.695 Ha.)																														
Month	Apr25	May25	Jun25	July	Aug25	Sep25	Apr25	May25	Jun25	July	Aug25	Sep25	Apr25	May25	Jun25	July	Aug25	Sep25	Apr25	May25	Jun25	July	Aug25	Sep25	Apr25	May25	Jun25	July	Aug25	Sep25
Near Mine Office	61.8	61.36	65.72	69.3	69.31	71.23	35.6	30.17	32.64	35.6	32.64	33.61	10.3	10.94	11.79	12.3	13.21	15.47	16.7	10.89	17.22	19.6	20.05	21.52	0.205	0.281	0.25	0.35	0.312	0.289
Mine Lease -1 North direction	62.7	67.59	64.33	72.56	78.64	72.46	31.6	33.23	30.15	40.12	38.71	43.42	8.2	10.31	11.32	15.89	14.89	13.73	17.1	18.43	18.05	21.36	19.72	21.81	0.221	0.303	0.27	0.321	0.378	0.329
Mines Lease -1 East direction	81.1	73.14	71.22	68.51	65.23	61.56	40.9	34.5	35.55	31.48	28.96	29.87	10.6	11.21	10.1	9.89	13.71	10.53	22.2	20.5	18.91	17.61	20.28	18.24	0.286	0.363	0.33	0.36	0.245	0.297
Mines Lease -1 South direction	64.9	69.96	64.48	79.52	60.6	69.74	32.7	34.4	30.22	43.65	25.33	36.21	8.5	10.69	11.52	18.96	15.79	12.46	17.8	19.19	17.68	25.41	22.64	20.82	0.228	0.312	0.28	0.274	0.456	0.354
For Mining Lease-2 (252.10 Ha.)																														
Month	Apr25	May25	Jun25	July	Aug25	Sep25	Apr25	May25	Jun25	July	Aug25	Sep25	Apr25	May25	Jun25	July	Aug25	Sep25	Apr25	May25	Jun25	July	Aug25	Sep25	Apr25	May25	Jun25	July	Aug25	Sep25
Mines Lease -2 East direction	68.6	73.95	68.16	80.45	61.37	73.81	34.5	36.36	32.9	40.23	32.14	39.44	9	11.32	10.77	15.46	10.46	18.71	18.8	20.26	19.08	20.93	15.89	24.26	0.241	0.33	0.3	0.345	0.489	0.407
Mines Lease -2 West direction	76.7	82.69	85.02	65.45	71.4	70.42	38.6	39.83	41.12	32.12	35.62	36.14	10	12.58	13.18	10.56	15.24	16.34	21	22.64	20.86	15.89	22.67	25.39	0.27	0.37	0.34	0.235	0.249	0.325
Mines Lease -2 North direction	67.1	70.32	73.14	75.46	82.36	68.79	33.8	34.93	37.64	37.64	37.54	37.54	8.8	9.31	9.75	13.2	11.62	15.67	18.4	18.91	17.43	21.68	16.31	19.72	0.236	0.283	0.26	0.29	0.315	0.287
Mines Lease -2 South direction	77.4	79.57	78.12	67.23	65.78	74.52	39	37.53	38.17	34.21	29.45	37.16	10.1	12.7	12.14	11.13	18.96	14.28	21.2	19.54	18.4	18.75	25.61	19.72	0.273	0.292	0.31	0.245	0.315	0.285
For Mining Lease -3 (3.09% Ha)																														
Month	Apr25	May25	Jun25	July	Aug25	Sep25	Apr25	May25	Jun25	July	Aug25	Sep25	Apr25	May25	Jun25	July	Aug25	Sep25	Apr25	May25	Jun25	July	Aug25	Sep25	Apr25	May25	Jun25	July	Aug25	Sep25
Mines Lease -3 East direction	66.4	60.55	62.49	78.19	82.64	66.96	33.4	29.71	28.66	35.72	34.67	35.54	8.7	9.2	8.57	17.63	19.78	9.87	18.2	16.88	16.06	25.46	23.45	17.21	0.234	0.25	0.23	0.315	0.348	0.294
Mines Lease -3 West direction	64.9	68.93	64.91	66.23	75.67	65.81	32.7	33.68	31.07	28.96	28.97	32.45	8.5	10.69	10.17	12.46	12.34	11.52	17.8	19.19	17.68	22.09	15.21	18.61	0.228	0.267	0.29	0.33	0.497	0.295
Mines Lease -3 North direction	71.5	77.08	80.02	61.87	68.31	60.27	36	37.59	38.62	25.43	31.21	28.11	9.4	11.82	12.62	9.15	14.67	13.96	19.6	20.54	18.85	16.78	19.54	20.83	0.252	0.287	0.26	0.311	0.315	0.421
Mines Lease -3 South direction	69.3	74.71	71.03	74.2	70.94	63.44	34.9	37.4	34.57	31.31	36.1	30.48	9.1	10.26	9.45	15.24	13.49	11.23	19	19.85	17.9	21.58	18.6	16.37	0.244	0.31	0.35	0.278	0.465	0.358
CPCB standards																														
100 µm/3 (24 Hours)							60 µm/3 (24 Hours)						80 µm/3 (24 Hours)						80 µm/3 (24 Hours)						4.0 mg/m3 (1 Hours)					

JK Lakshmi Cement Ltd, Durg Malpuri Khurd Ahiwara Durg CG													
STACK EMISSION ANALYSIS REPORT APRIL TO SEP, 2025													
Particulars	Unit	Stack 1	Stack 2	Stack 3	Stack 4	Stack 5	Stack 6		Stack 7		Stack 8	Stack 9	
		Raw Mill RABH	Clinker Cooler ESP	Coal Mill Bag House	Cement Mill-1 Bag House	Cement Mill-2 Bag House	Slag Mill Bag House	Conse nt Status	Captive power plant	Con sent Stat us	Mine Crasher	DG Set	Consent Status
Stack Attached with	-												
Stack Height	meter	64	43	57.7	56.1	56.1	48	-	84		32	5	
Stack Inner Dia	meter	6	3.55	2.8	1.4	1.4	4.3	-	4.8		1.5	0.25	
Apr25													
Flue Gas Temperature	<sup>0</sup> C	101	116	78	80	82	132	-	123		47	128	
Velocity	m/s	11.19	12.06	11.08	10.85	10.12	12.25	-	12.52		11.3	12.35	
Total Volumetric Flow	Nm <sup>3</sup> /hr	872576	317070	200767	48876	45326	453924	-	590018		64479	1562	
Total Particulate Matter (TPM)	mg/Nm <sup>3</sup>	22.14	21.22	24.18	23.5	23.36	24.54	< 30.0	23.1	30	20.66	13.8	150
SO2	mg/Nm <sup>3</sup>	51.34	NA	NA	21.46	NA	NA	100	76.38	100	NA	57.5	-
NOx	mg/Nm <sup>3</sup>	296.4	NA	NA	NA	NA	NA	600	69.42	100	NA	84.3	-
Mercury(Hg)									0.0144	0.03	NA		
May25													
Flue Gas Temperature	<sup>0</sup> C	101	124	66	75	78	76	-	118		40	135	
Velocity	m/s	11.19	10.8	10.55	9.07	9.46	11.08	-	10.16		10.35	11.28	
Total Volumetric Flow	Nm <sup>3</sup> /hr	872576	278275	198022	41454	42873	476533	-	485462		60377.04	1402	
Total Particulate Matter (TPM)	mg/Nm <sup>3</sup>	22.14	17.36	21.65	23.08	21.74	23.1	< 30.0	24.5	30	17.25	16.43	150
SO2	mg/Nm <sup>3</sup>	51.34	NA	NA	21.46	NA	NA	100	71.29	100	NA	79.5	-
NOx	mg/Nm <sup>3</sup>	296.4	NA	NA	NA	NA	NA	600	60.77	100	NA	87.3	-
Mercury(Hg)									0.0086	0.03	NA	NA	
June25													
Flue Gas Temperature	<sup>0</sup> C	81	115	62	79	76	70	-	107		38	126	
Velocity	m/s	9.94	10.54	9.91	9.96	9.57	10.64	-	10.47		9.96	10.9	
Total Volumetric Flow	Nm <sup>3</sup> /hr	819584.12	277764.47	188192.45	45006.58	43610.31	465777.72	-	514667.52		58489.56	1386.09	
Total Particulate Matter (TPM)	mg/Nm <sup>3</sup>	18.25	15.8	17.33	22.51	21.16	22.84	< 30.0	23.07	30	15.29	21.68	150
SO2	mg/Nm <sup>3</sup>	61.39	NA	NA	21.46	NA	NA	100	65.88	100	NA	72.2	-
NOx	mg/Nm <sup>3</sup>	246.1	NA	NA	NA	NA	NA	600	52.4	100	NA	80.6	-
Mercury(Hg)	mg/Nm <sup>3</sup>	NA	NA	NA	NA	NA	NA		0.0073	0.03	NA	NA	NA
July25													
Flue Gas Temperature	<sup>0</sup> C	76	124	64	77	75	78	-	112		36	117	
Velocity	m/s	7.5	9.66	8.99	10.23	9.71	8.97	-	11.37		10.13	11.29	
Total Volumetric Flow	Nm <sup>3</sup> /hr	641238.85	266627.31	173456.76	46558.32	44980.41	402841.55	-	550965.9		60602.42	1465.66	
Total Particulate Matter (TPM)	mg/Nm <sup>3</sup>	21.2	23.4	19.5	21.14	22.7	23.4	< 30.0	21.85	30	12.92	25.1	150
SO2	mg/Nm <sup>3</sup>	56.22	NA	NA	21.46	NA	NA	100	60.37	100	NA	80.44	-
NOx	mg/Nm <sup>3</sup>	214.89	NA	NA	NA	NA	NA	600	49.56	100	NA	89.2	-
Mercury(Hg)	mg/Nm <sup>3</sup>	NA	NA	NA	NA	NA	NA		0.0061	0.03	NA	NA	
Aug2025													
Flue Gas Temperature	<sup>0</sup> C	78	123	65	75	78	72		116		36	126	
Velocity	m/s	8.68	10.66	8.2	10.82	10.42	9.25		11.2		10.66	10.83	
Total Volumetric Flow	Nm <sup>3</sup> /hr	720933	274780	154185	49423.28	47211.83	402308.75		537039		62939	1375.13	
Total Particulate Matter (TPM)	mg/Nm <sup>3</sup>	19.68	23.4	21.26	22.35	24.5	23.6		19.45	30	21.2	22.56	150
SO2	mg/Nm <sup>3</sup>	63.04	NA	NA	21.46	NA	NA	100	52.28	100	NA	73.39	-
NOx	mg/Nm <sup>3</sup>	345.5	NA	NA	NA	NA	NA	600	45.1	100	NA	80.53	-
Mercury(Hg)	mg/Nm <sup>3</sup>	NA	NA	NA	NA	NA	NA		0.0047	0.03	NA	NA	
Sept2025													
Flue Gas Temperature	<sup>0</sup> C	66	115	58	72	76	69	-	124		32	118	
Velocity	m/s	9.16	9.92	8.87	10.66	10.86	9.5	-	10.2		10.24	11.74	
Total Volumetric Flow	Nm <sup>3</sup> /hr	791376.63	262390.23	171010.39	49301.2	49431	418208.69	-	481053.5		61526.56	1527.85	
Total Particulate Matter (TPM)	mg/Nm <sup>3</sup>	17.35	19.46	17.08	23.71	22.36	22.15	< 30.0	17.83	30	23.55	26.42	150
SO2	mg/Nm <sup>3</sup>	55.29	NA	NA	NA	NA	NA	100	49.11	100	NA	70.38	-
NOx	mg/Nm <sup>3</sup>	225.1	NA	NA	NA	NA	NA	600	42.23	100	NA	74.59	-
Mercury(Hg)	mg/Nm <sup>3</sup>	NA	NA	NA	NA	NA	NA		0.0044	0.03	NA	NA	NA

## JK Lakshmi Cement Ltd. Durg

### Malpuri khurd Ahiwara

### **Result of Test report of fugitive dust Workplace Air Quality Emission Monitoring**

[illegible]



## JK Lakshmi Cement Ltd. Durg

<b>Malpuri khurd Ahiwara</b>
------------------------------

**Noise Level Report plant April to September - 2025**

Code	Stations	Apr25	May25	Jun25	Jul25	Aug25	Sep25
NL – 1	Main gate Plant Boundary	62.8	64.7	66.4	67.3	65.6	64.1
NL – 2	Coal Dump Side plant Boundary	58.7	66.9	63	65.4	61.6	62.4
NL – 3	Railway Siding plant Boundary	64.3	63.2	62.1	60.1	66.8	67.1
NL – 4	Clinker Yard plant Boundary	64.7	60.5	57	59.7	59.4	63.7

Noise level (Day hours) CBCP standar 75dB(A)
--

Code	Stations	Apr25	May25	Jun25	Jul25	Aug25	Sep25
NL – 1	Main gate Plant Boundary	53.1	56.2	57.7	60.2	58.2	61.8
NL – 2	Coal Dump Side plant Boundary	51.4	59.2	56	59.6	55.5	58.6
NL – 3	Railway Siding plant Boundary	52.9	57.1	54.9	53.2	60.1	59.5
NL – 4	Clinker Yard plant Boundary	53.9	52.2	49.2	52.3	52.2	57

<b>Noise level (night hours) CBCP standar 70 dB(A)</b>
--

<b><u>JK Lakshmi Cement Ltd.</u></b>						
<b><u>Malpuri Khurd Ahiwara Dueg CG</u></b>						
<b><u>Noise level data at mines area</u></b>						
<b><u>Noise level (Day hours) MI-1</u></b>						
<b>Location</b>	<b>Apr25</b>	<b>May25</b>	<b>Jun25</b>	<b>July</b>	<b>Aug25</b>	<b>Sep25</b>
Near Mine Office	61.5	56.1	54.5	56.1	60.4	61.2
Mine Lease -1 Towards North direction	55.2	52.8	49.7	50.3	55.7	56.8
Mines Lease -1 Towards East direction	53.9	53.6	50.5	53.4	63.6	65.4
Mines Lease -1 Towards South direction	52.7	55.2	52.9	56.7	62.4	64.1
<b>CPCB Standards for Industrial Area 75 dB(A)</b>						
<b><u>Noise level (night hours) ML-1</u></b>						
<b>Location</b>	<b>Apr25</b>	<b>May25</b>	<b>Jun25</b>	<b>July</b>	<b>Aug25</b>	<b>Sep25</b>
Near Mine Office	52.4	49.6	46.7	50.4	51.3	52.6
Mine Lease -1 Towards North direction	47.3	45.2	42.6	42.6	48.2	51.1
Mines Lease -1 Towards East direction	48.4	45.7	43	45.2	57.5	58.2
Mines Lease -1 Towards South direction	47.3	47.1	44.4	51.7	56.6	58.9
<b>CPCB Standards for Industrial Area 70 dB(A)</b>						
<b><u>Noise level (Day hours) MI-2</u></b>						
<b>Location</b>	<b>Apr25</b>	<b>May25</b>	<b>Jun25</b>	<b>July</b>	<b>Aug25</b>	<b>Sep25</b>
Mines Lease -2 Towards East direction	54.4	56.3	53	58.3	60.1	55.8
Mine Lease -2 Towards West direction	55.6	57.8	59.3	62.3	53.2	60.9
Mines Lease -2 Towards North direction	53.9	55.4	56.9	60.4	64.6	58.2
Mines Lease -2 Towards South direction	54.2	55.9	57.4	55.3	57.2	55.7
<b>CPCB Standards for Industrial Area 75 dB(A)</b>						
<b><u>Noise level (night hours) MI-2</u></b>						
<b>Location</b>	<b>Apr25</b>	<b>May25</b>	<b>Jun25</b>	<b>July</b>	<b>Aug25</b>	<b>Sep25</b>
ML-2 Towards East Direction	48.1	45.8	43.1	50.1	53.9	47.6
ML-2 Towards West Direction	48.3	51.1	52.4	55.8	50.8	53.7
ML-2 Towards North Direction	47.5	48.3	19.6	55.2	56.2	53.1
ML-2 Towards North Direction	47.9	47.4	48.6	48.7	50.6	48.9
<b>CPCB Standards for Industrial Area 70 dB(A)</b>						
<b><u>Noise level (Day hours) ML-3</u></b>						
<b>Location</b>	<b>Apr25</b>	<b>May25</b>	<b>Jun25</b>	<b>July</b>	<b>Aug25</b>	<b>Sep25</b>
Mines Lease -3 Towards East direction	55.6	56.6	58.1	52.8	54.7	66.2
Mine Lease -3 Towards West direction	53.8	54.7	56.1	62.3	58.6	61.1
Mines Lease -3 Towards North direction	56.9	57.2	58.7	54.9	60.9	62
Mines Lease -3 Towards South direction	57.2	59.5	61.1	65.6	61.6	64.8
<b>CPCB Standards for Industrial Area 75 dB(A)</b>						
<b><u>Noise level (night hours) MI-3</u></b>						
<b>Location</b>	<b>Apr25</b>	<b>May25</b>	<b>Jun25</b>	<b>July</b>	<b>Aug25</b>	<b>Sep25</b>
ML-3 Towards East Direction	48.8	48.2	49.5	46.6	46.3	60.7
ML-3 Towards West Direction	47.1	46.5	47.7	55.1	51.5	55.4
ML-3 Towards North Direction	49.3	50.6	51.9	48.8	52.8	57.5
ML-3 Towards North Direction	47.5	50.9	52.2	58.4	53.4	57.2
<b>CPCB Standards for Industrial Area 70 dB(A)</b>						

JK Lakshmi Cement Ltd. Durg			
<u>Malpuri khurd Ahiwara</u>			
<u>Result of Test report of Work Zone Noise level Monitoring</u>			
Sr. No	Monitoring Location	Average Noise Level in db(A) - Leq	
Month		May25	Aug25
1	Kiln Area	71.7	68.8
2	Raw mill area	73.8	71.7
3	Coal Mill area	65.5	64.1
4	Cement Mill area	77.5	75.2
5	Packing plant area	72.3	70
6	CPP Plant area	75.8	74.1
7	Lime stone Crusher area	75.2	73.8
	Noise Limit as per the factories act		< 85 db (A)- Leq



JK Lakshmi Cement Ltd. Durg											
Malpuri Khurd Ahiwara Durg CG											
Sample Description : Ground Water Core Zone					Sampling Date : 22/05/2025						
Analysis Start Date : 23/05/2025					Analysis Completion Date : 09/06/2025						
Sample Quantity : 2L+2L+1L					Sampling Location of Bore Wells Ground Water						
Sampling Method : IS3025 (Part - 1)											
Sr.No.	Parameter	unit	Acceptable Limit	Permissible Limit in absence of Alternate Source	Test Method	Anand badi	Narayan badi	Store Building	Dutta Yard	CPP	Mines
						Test result					
1	pH at 25 C	pH Unit	6.5-8.5	No Relaxation	IS:3025(Part-11)	6.9	7.1	6.67	7.08	7.05	7.1
2	Electrical Conductivity	uS/cm	Not Specified		IS:3025(Part-14)	460	315	449	345	642	297
3	Turbidity	NTU	1	5	IS:3025(Part-10)	0.5	<0.5	0.6	<0.5	0.7	<0.5
4	Color	Pt. Co.Scale	5	15	APHA 24th Edition,2120C	<5	<5	<5	<5	<5	<5
5	Odour	—	Agreeable	Agreeable	IS:3025(Part-5)	Agreeable	Agreeable	Agreeable	Agreeable	Agreeable	Agreeable
6	Taste	—	Agreeable	Agreeable	IS:3025(Part- 7&8)	Agreeable	Agreeable	Agreeable	Agreeable	Agreeable	Agreeable
7	Total Dissolved Solids (TDS)	mg/L	500	2000	IS:3025(Part-16)	285	197	279	215	397	183
8	Total Alkalinity as CaCO3	mg/L	200	600	IS:3025(Part-23)	155	115	185	130	200	105
9	Total Hardness as CaCO3	mg/L	200	600	IS:3025(Part-21)	295	105	78	69	355	115
10	Calcium	mg/L	75	200	IS:3025(Part-40)	74.14	25.23	24.87	21.38	92.18	28.56
11	Magnesium	mg/L	30	100	IS:3025(Part-46)	26.73	12.13	10.36	9.56	30.37	11.25
12	Chloride	mg/L	250	1000	IS:3025(Part-32)	34.24	28.56	32.48	40.02	90.5	25.58
13	Sulphate	mg/L	200	400	APHA 24th Edition,4500 SO4-2E	16.7	14.9	17.5	18.4	23.7	11.7
14	Fluoride	mg/L	1	1.5	APHA 24th Edition,4500 F-D	0.12	0.11	0.13	0.15	0.19	0.15
15	Nitrate	mg/L	45	No Relaxation	IS:3025(P-34 /Sec.-1)	1.13	0.57	1.19	0.62	2.33	0.61
16	Iron	mg/L	0.3	No Relaxation	IS:3025(Part-53)	0.13	0.11	0.17	0.09	0.21	0.13
17	Manganese	mg/L	0.1	0.03	IS:3025(Part-59)	<0.05	<0.05	<0.05	<0.05	<0.05	<0.05
18	Zinc	mg/L	5	15	IS:3025(Part-49)	0.11	<0.05	0.13	<0.05	0.18	0.12
19	Copper	mg/L	0.05	1.5	APHA 24th Edition,3500-Cu B	<0.025	<0.025	<0.025	<0.025	<0.025	<0.025
20	Aluminium	mg/L	0.03	0.2	IS:3025(Part-55)	<0.01	<0.01	<0.01	<0.01	<0.01	<0.01
21	Boron	mg/L	<0.5	1	APHA 24th Edition,4500-B-B	<0.1	<0.1	<0.1	<0.1	<0.1	<0.1
22	Cadmium	mg/L	0.003	No Relaxation	APHA 24th Edition,3111 B	<0.001	<0.001	<0.001	<0.001	<0.001	<0.001
23	Arsenic	mg/L	0.01	0.05	APHA 24th Edition,3114 C	<0.002	<0.002	<0.002	<0.002	<0.002	<0.002
24	Lead	mg/L	0.01	No Relaxation	APHA 24th Edition,3111 B	<0.0075	<0.0075	<0.0075	<0.0075	<0.0075	<0.0075
25	Chromium	mg/L	0.05	No Relaxation	IS:3025(Part-52)	<0.025	<0.025	<0.025	<0.025	<0.025	<0.025
26	Selenium	mg/L	0.01	No Relaxation	IS:3025(Part-56)	<0.005	<0.005	<0.005	<0.005	<0.005	<0.005
27	Mercury	mg/L	0.001	No Relaxation	APHA 24th Edition,3500- Hg	<0.0005	<0.0005	<0.0005	<0.0005	<0.0005	<0.0005
28	Total Coliform	MPN/100ML	Shall not be detectable in any 100 ml of		APHA 24th Edit,9221 D	Absent	Absent	Absent	Absent	Absent	Absent
29	Escherichia coil	MPN/100ML	Shall not be detectable in any 100 ml of		APHA 24th Edit,9221 D,F	Absent	Absent	Absent	Absent	Absent	Absent
30	Biochemical Oxygen Demand (BOD)	MPN/100ML	Not Specified		IS:3025(Part-44)	<5	<5	<5	<5	<5	<5
31	Chemical Oxygen Demand (COD)	MPN/100ML	Not Specified		APHA 24th Edition,5220 B	<5	<5	<5	<5	<5	<5

JK Lakshmi Cement Ltd. Durg											
Malpuri Khurd Ahiwara Durg CG											
Sample Description : Ground Water Buffer Zone					Sampling Date : 22/05/2025						
Analysis Start Date : 24/05/2025					Analysis Completion Date : 09/06/2025						
Sample Quantity : 2L+2L+1L					Sampling Location of Villages Ground Water (Hand Pump)						
Sampling Method : IS3025 (Part - 1)											
Sr.No.	Parameter	unit	Acceptable Limit	Permissible Limit in absence of Alternate Source	Test Method	Hardi	Nandini	Semaria	Ghirkudia	Malpuri	Khasadih
1	pH at 25 C	pH Unit	6.5-8.5	No Relaxation	IS:3025(Part-11)	7.51	7.22	7.39	7.64	7.83	7.53
2	Electrical Conductivity	uS/cm	Not Specified		IS:3025(Part-14)	371	293	415	313	327	809
3	Turbidity	NTU	1	5	IS:3025(Part-10)	<0.5	<0.5	<0.5	0.8	<0.5	<0.5
4	Color	Pt. Co.Scale	5	15	APHA 24th Edition,2120C	<5	<5	<5	<5	<5	<5
5	Odour	—	Agreeable	Agreeable	IS:3025(Part-5)	Agreeable	Agreeable	Agreeable	Agreeable	Agreeable	Agreeable
6	Taste	—	Agreeable	Agreeable	IS:3025(Part- 7&8)	Agreeable	Agreeable	Agreeable	Agreeable	Agreeable	Agreeable
7	Total Dissolved Solids (TDS)	mg/L	500	2000	IS:3025(Part-16)	228	180.1	256	197	201	601
8	Total Alkalinity as CaCO3	mg/L	200	600	IS:3025(Part-23)	120	105	195	140	115	270
9	Total Hardness as CaCO3	mg/L	200	600	IS:3025(Part-21)	135	85	220	110	125	410
10	Calcium	mg/L	75	200	IS:3025(Part-40)	45.23	34.58	64.12	41.26	39.48	72.14
11	Magnesium	mg/L	30	100	IS:3025(Part-46)	21.44	11.12	14.58	13.78	18.68	55.89
12	Chloride	mg/L	250	1000	IS:3025(Part-32)	31.35	26.45	22.01	30.47	30.55	139.42
13	Sulphate	mg/L	200	400	APHA 24th Edition,4500 SO4-2E	8.44	10.23	9.45	12.45	15.62	51.9
14	Fluoride	mg/L	1	1.5	APHA 24th Edition,4500 F-D	0.12	0.11	0.113	0.15	0.13	0.09
15	Nitrate	mg/L	45	No Relaxation	IS:3025(P-34 /Sec.-1)	4.49	0.32	0.62	1.34	0.05	1.43
16	Iron	mg/L	0.3	No Relaxation	IS:3025(Part-53)	0.05	0.09	0.08	0.13	0.08	0.09
17	Manganese	mg/L	0.1	0.03	IS:3025(Part-59)	<0.05	<0.05	<0.05	<0.05	<0.05	<0.05
18	Zinc	mg/L	5	15	IS:3025(Part-49)	0.13	0.11	0.121	0.23	0.09	1.27
19	Copper	mg/L	0.05	1.5	APHA 24th Edition,3500-Cu B	<0.025	<0.025	<0.025	<0.025	<0.025	<0.025
20	Aluminium	mg/L	0.03	0.2	IS:3025(Part-55)	<0.01	<0.01	<0.01	<0.01	<0.01	<0.01
21	Boron	mg/L	<0.5	1	APHA 24th Edition,4500-B-B	<0.1	<0.1	<0.1	<0.1	<0.1	<0.1
22	Cadmium	mg/L	0.003	No Relaxation	APHA 24th Edition,3111 B	<0.001	<0.001	<0.001	<0.001	<0.001	<0.001
23	Arsenic	mg/L	0.01	0.05	APHA 24th Edition,3114 C	<0.002	<0.002	<0.002	<0.002	<0.002	<0.002
24	Lead	mg/L	0.01	No Relaxation	APHA 24th Edition,3111 B	<0.0075	<0.0075	<0.0075	<0.0075	<0.0075	<0.0075
25	Chromium	mg/L	0.05	No Relaxation	IS:3025(Part-52)	<0.025	<0.025	<0.025	<0.025	<0.025	<0.025
26	Selenium	mg/L	0.01	No Relaxation	IS:3025(Part-56)	<0.005	<0.005	<0.005	<0.005	<0.005	<0.005
27	Mercury	mg/L	0.001	No Relaxation	APHA 24th Edition,3500- Hg	<0.0005	<0.0005	<0.0005	<0.0005	<0.0005	<0.0005
28	Total Coliform	MPN/100Ml	Shall not be detectable in any 100 ml of		APHA 24th Edit,9221 D	Absent	Absent	Absent	Absent	Absent	Absent
29	Escherichia coil	MPN/100Ml	Shall not be detectable in any 100 ml of		APHA 24th Edit,9221 D,F	Absent	Absent	Absent	Absent	Absent	Absent
30	Biochemical Oxygen Demand (BOD)	MPN/100Ml	Not Specified		IS:3025(Part-44)	<5	<5	<5	<5	<5	<5
31	Chemical Oxygen Demand (COD)	MPN/100Ml	Not Specified		APHA 24th Edition,5220 B	<5	<5	<5	<5	<5	<5

**JK Lakshmi Cement Ltd. Durg****Malpuri Khurd Ahiwara Durg CG****Water analysis Report April to Sep.- 2025****STP WATER QUALITY REPORT**

Sr. No.	Parameter	Unit	Standards as EPA-1986 (Schedule	Values					
				Apr25	May25	Jun25	Jul25	Aug25	Sep25
1	pH	PH unit	5.5-9.0	7.82	8.41	7.16	7.9	8.05	7.92
2	TSS	mg/l	100	26	18.7	32	35.6	32.4	30
3	TDS	mg/l	-	462	255	492	415	477	423
4	COD	mg/l	250	24	16.4	36	55.6	38.4	33.7
5	BOD	mg/l	-	14	12.9	12.5	15.7	17.2	14.9
6	Oil & Grease	mg/l	-	BDL	BDL	BDL	<5.0	<5.0	<5.0
7	DO		-	6.1	3.1	5.83	6.12	5.1	5.26

**Captive Power plant Effluent WATER QUALITY REPORT**

Sr. No.	Parameter	Unit	Standards as EPA-1986 (Schedule	Values					
				Apr25	May25	Jun25	Jul25	Aug25	Sep25
1	pH	PH unit	5.5-9.0	7.94	7.42	7.29	7.8	7.9	7.34
2	TSS	mg/l	<100	16	21.9	21	18	37.4	36
3	TDS	mg/l	<2100	314	512	422	397	987	782
4	COD	mg/l	<250	16	38.9	20	27.8	33.5	28
5	BOD	mg/l	<30	3.8	8.4	2.4	3.5	9.1	7.4
6	Oil & Grease	mg/l	<10	BDL	1	BDL	<5.0	<5.0	<5.0

**WHR Recycled WATER QUALITY REPORT**

Sr. No.	Parameter	Unit	Standards as EPA-1986 (Schedule	Values					
				Apr25	May25	Jun25	Jul25	Aug25	Sep25
1	pH	PH unit	5.5-9.0	7.72	7.61	7.63	7.7	7.85	7.69
2	TSS	mg/l	<100	14	12.7	16	12	34.5	28
3	TDS	mg/l	<2100	270	259	358	372	201	316
4	COD	mg/l	<250	18.4	15.4	15.2	35.4	42.1	36.5
5	BOD	mg/l	<30	4.6	5	2	3.2	5.5	3.2

JK Lakshami Cement Ltd. Durg						
Malpuri Khurd Ahiwara Durg CG						
Sample Description : Mines Pit Water -1			Sample Packing : Packing And Sealed			
Sampling Location : Mines Pit			Analysis Start Date : 26/04/2025			
Sampling Date : 26/04/2025			Analysis Completion Date : 02/05/2025			
Sample Quantity : 2L+2L+1L			Sampling Method : IS3025 (Part - 1)			
Sr.No.	Parameter	unit	Test Result	Acceptable Limit	Permissible Limit in absence of Alternate Source	Test Method
1	Color	Pt. Co.Scale	<2	5	15	APHA 24th Edition,2120C
2	Odour	-	Agreeable	Agreeable	Agreeable	IS:3025(Part-5)
3	Taste	-	Agreeable	Agreeable	Agreeable	IS:3025(Part- 7&8)
4	Turbidity	NTU	1.5	1	5	IS:3025(Part-10)
5	Total Dissolved Soil (TDS)	mg/L	740	500	2000	IS:3025(Part-16)
6	pH at 25 C	pH Unit	7.81	6.5-8.5	No Relaxation	IS:3025(Part-11)
7	Dissolved Oxygen (DO)	mg/L	6	Not Specified		IS:3025(Part-38)
8	Chemical Oxygen Demand (BOD)	mg/L	6.8	Not Specified		IS:3025(Part-44)
9	Chemical Oxygen Demand (COD)	mg/L	30.7	Not Specified		APHA 24th Edition,5220 B
10	Conductivity	uS/cm	1174	Not Specified		IS:3025(Part-14)
11	Total Alkalinity as CaCO3	mg/L	230	200	600	IS:3025(Part-23)
12	Total Hardness as CaCO3	mg/L	318	200	600	IS:3025(Part-21)
13	Calcium	mg/L	82.1	75	200	IS:3025(Part-40)
14	Magnesium	mg/L	27.4	30	100	IS:3025(Part-46)
15	Chloride	mg/L	40.1	250	1000	IS:3025(Part-32)
16	Sulphate	mg/L	28.2	200	400	APHA 24th Edition,4500 S04-2E
17	Fluoride	mg/L	0.91	1	1.5	APHA 24th Edition,4500 F-D
18	Nitrate	mg/L	7.4	45	No Relaxation	IS:3025(P-34 /Sec.-1)
19	Iron	mg/L	0.12	0.3	No Relaxation	IS:3025(Part-53)
20	Manganese	mg/L	<0.05	0.1	0.03	IS:3025(Part-59)
21	Zinc	mg/L	0.11	5	15	IS:3025(Part-49)
22	Copper	mg/L	<0.025	0.05	1.5	APHA 24th Edition,3500-Cu B
23	Aluminium	mg/L	<0.01	0.03	0.2	IS:3025(Part-55)
24	Boron	mg/L	<0.1	<0.5	1	APHA 24th Edition,4500-B-B
25	Cadmium	mg/L	<0.001	0.003	No Relaxation	APHA 24th Edition,3111 B
26	Arsenic	mg/L	<0.002	0.01	0.05	APHA 24th Edition,3114 C
27	Lead	mg/L	<0.0075	0.01	No Relaxation	APHA 24th Edition,3111 B
28	Chromium	mg/L	<0.025	0.05	No Relaxation	IS:3025(Part-52)
29	Selenium	mg/L	<0.005	0.01	No Relaxation	IS:3025(Part-56)
30	Mercury	mg/L	<0.0005	0.001	No Relaxation	APHA 24th Edition,3500- Hg
31	Total Coliform	MPN/100 ML	94	Shall not be detectable in any 100 ml of Sample		APHA 24th Edit,9221 D
32	Escherichia coil	MPN/100 ML	58	Shall not be detectable in any 100 ml of Sample		APHA 24th Edit,9221 D,F



JK Lakshami Cement Ltd. Durg						
Malpuri Khurd Ahiwara Durg CG						
Sample Description : Mines Pit Water -2			Sample Packing : Packing And Sealed			
Sampling Location : Mines Pit			Analysis Start Date : 26/04/2025			
Sampling Date : 26/04/2025			Analysis Completion Date : 02/05/2025			
Sample Quantity : 2L+2L+1L			Sampling Method : IS3025 (Part - 1)			
Sr.No.	Parameter	unit	Test Result	Acceptable Limit	Permissible Limit in absence of Alternate Source	Test Method
1	Color	Pt. Co.Scale	<2	5	15	APHA 24th Edition,2120C
2	Odour	-	Agreeable	Agreeable	Agreeable	IS:3025(Part-5)
3	Taste	-	Agreeable	Agreeable	Agreeable	IS:3025(Part- 7&8)
4	Turbidity	NTU	0.7	1	5	IS:3025(Part-10)
5	Total Dissolved Soil (TDS)	mg/L	672	500	2000	IS:3025(Part-16)
6	pH at 25 C	pH Unit	7.61	6.5-8.5	No Relaxation	IS:3025(Part-11)
7	Dissolved Oxygen (DO)	mg/L	6.5	Not Specified		IS:3025(Part-38)
8	biochemical Oxygen Demand (BOD)	mg/L	5	Not Specified		IS:3025(Part-44)
9	Chemical Oxygen Demand (COD)	mg/L	23.3	Not Specified		APHA 24th Edition,5220 B
10	Conductivity	uS/cm	1085	Not Specified		IS:3025(Part-14)
11	Total Alkalinity as CaCO3	mg/L	209	200	600	IS:3025(Part-23)
12	Total Hardness as CaCO3	mg/L	284	200	600	IS:3025(Part-21)
13	Calcium	mg/L	72.1	75	200	IS:3025(Part-40)
14	Magnesium	mg/L	25.3	30	100	IS:3025(Part-46)
15	Chloride	mg/L	28.9	250	1000	IS:3025(Part-32)
16	Sulphate	mg/L	20.7	200	400	APHA 24th Edition,4500 SO4-2E
17	Fluoride	mg/L	0.58	1	1.5	APHA 24th Edition,4500 F-D
18	Nitrate	mg/L	3.8	45	No Relaxation	IS:3025(P-34 /Sec.-1)
19	Iron	mg/L	0.063	0.3	No Relaxation	IS:3025(Part-53)
20	Manganese	mg/L	<0.05	0.1	0.03	IS:3025(Part-59)
21	Zinc	mg/L	0.06	5	15	IS:3025(Part-49)
22	Copper	mg/L	<0.025	0.05	1.5	APHA 24th Edition,3500-Cu B
23	Aluminium	mg/L	<0.01	0.03	0.2	IS:3025(Part-55)
24	Boron	mg/L	<0.1	<0.5	1	APHA 24th Edition,4500-B-B
25	Cadmium	mg/L	<0.001	0.003	No Relaxation	APHA 24th Edition,3111 B
26	Arsenic	mg/L	<0.002	0.01	0.05	APHA 24th Edition,3114 C
27	Lead	mg/L	<0.0075	0.01	No Relaxation	APHA 24th Edition,3111 B
28	Chromium	mg/L	<0.025	0.05	No Relaxation	IS:3025(Part-52)
29	Selenium	mg/L	<0.005	0.01	No Relaxation	IS:3025(Part-56)
30	Mercury	mg/L	<0.0005	0.001	No Relaxation	APHA 24th Edition,3500- Hg
31	Total Coliform	MPN/100ML	63	Shall not be detectable in any 100 ml of Sample		APHA 24th Edit,9221 D
32	Escherichia coil	MPN/100ML	27	Shall not be detectable in any 100 ml of Sample		APHA 24th Edit,9221 D,F

JK Lakshami Cement Ltd. Durg				
Malpuri Khurd Ahiwara Durg CG				
Sample Description : Surface Water		Sample Packing : Packing And Sealed		
Sampling Location : Shivnth River Intake		Analysis Start Date : 11/08/2025		
Sampling Date : 11/08/2025		Analysis Completion Date : 22/08/2025		
Sample Quantity : 2L+2L+1L		Sampling Method : IS3025 (Part - 1)		
Sr.No.	Parameter	unit	Test Result	Test Method
1	pH	pH Unit	7.56	IS:3025(Part-11)
2	Electrical Conductivity	uS/cm	389	IS:3025(Part-14)
3	Turbidity	NTU	0.8	IS:3025(Part-10)
4	Color	Pt. Co.Scale	<5	APHA 24th Edition,2120C
5	Total Dissolved Soil (TDS)	mg/L	237	IS:3025(Part-16)
6	Total Alkalinity	mg/L	150	IS:3025(Part-23)
7	Total Hardness	mg/L	138	IS:3025(Part-21)
8	Cadmium	mg/L	35.6	IS:3025(Part-40)
9	Magnesium	mg/L	11.9	IS:3025(Part-46)
10	Chloride	mg/L	41.1	IS:3025(Part-32)
11	Sulphate	mg/L	7.12	APHA 24th Edition,4500 SO4-2E
12	Fluoride	mg/L	<0.05	APHA 24th Edition,4500 F-D
13	Nitrate	mg/L	0.85	IS:3025(P-34 /Sec.-1)
14	Iron	mg/L	0.12	IS:3025(Part-53)
15	Manganese	mg/L	<0.05	IS:3025(Part-59)
16	Zinc	mg/L	0.15	IS:3025(Part-49)
17	Copper	mg/L	<0.025	APHA 24th Edition,3500-Cu B

18	<b>Aluminium</b>	mg/L	<0.01	IS:3025(Part-55)
19	<b>Boron</b>	mg/L	<0.1	APHA 24th Edition,4500-B-B
20	<b>Cadmium</b>	mg/L	<0.001	APHA 24th Edition,3111 B
21	<b>Arsenic</b>	mg/L	<0.002	APHA 24th Edition,3114 C
22	<b>Lead</b>	mg/L	<0.0075	APHA 24th Edition,3111 B
23	<b>Chromium</b>	mg/L	<0.025	IS:3025(Part-52)
24	<b>Selenium</b>	mg/L	<0.005	IS:3025(Part-56)
25	<b>Mercury</b>	mg/L	<0.0005	APHA 24th Edition,3500- Hg
26	<b>Total Coliform</b>	MPN/100 ML	4	APHA 24th Edit,9221 D
27	<b>Escherichia coil</b>	MPN/100 ML	2	APHA 24th Edit,9221 D,F
28	<b>chemical Oxygen Demand (BOD)</b>	mg/L	5.3	IS:3025(Part-44)
29	<b>hemical Oxygen Demand (COD)</b>	mg/L	7.5	APHA 24th Edition,5220 B

Soil Analysis report Plant and near by vill

JK Lakshami Cement Ltd. Durg											
Malpuri Khurd Ahiwara Durg CG											
Sample Description : Soil					Sample Receipt Date :26/05/2025						
Sampling Date : 23/05/2025		Analysis Completion Dat : 30/05/2025			Analysis Completion Dat : 30/05/2025						
Analysis Start Date : 26/05/2025		Sampling Collected By : ETPL Representative									
Sample Quantity : 1Kg/1No.					Sampling Location of Villages						
Sr.No.	Parameter	unit	Test Method	Khasadih	Nandini	Pitoura	Semaria	Hardi	Ghirkudia	Girhola	Malpuri
				Test result							
1	pH at 25 °C	-	IS:2720(PART26)	7.08	7.39	9.98	7.05	6.98	7.18	7.12	7.43
2	Electrical Conductivity at 25°C	mS/cm	SOP No.:SOP/SOIL/02	1.123	1.089	1.236	1.189	1.076	1.156	1.042	1.039
3	Organic Carbon	%	SOP No.:SOP/SOIL/25	0.65	0.52	0.89	0.78	0.35	0.65	0.96	0.82
4	Moisture	%	IS:2720(PART-18)1992	35.6	65.1	45.3	55.3	45.1	40.2	35.4	27.6
5	Copper	mg/kg	SOP No.:SOP/SOIL/36	2.89	3.89	5.63	4.65	3.12	1.56	1.45	1.04
6	Cadmium	mg/kg	SOP No.:SOP/SOIL/37	0.15	0.19	0.19	0.11	0.19	0.16	0.32	0.27
7	Cobalt	mg/kg	SOP No.:SOP/SOIL/38	0.25	0.31	0.28	0.11	0.15	0.19	0.14	0.19
8	Nickel	mg/kg	SOP No.:SOP/SOIL/39	0.98	0.75	0.61	0.89	0.78	0.65	0.95	0.56
9	Chromium	mg/kg	SOP No.:SOP/SOIL/69	0.21	0.19	0.24	0.13	0.1	0.15	0.11	0.12
10	Lead	mg/kg	SOP No.:SOP/SOIL/41	<0.10	<0.10	<0.10	<0.10	<0.10	<0.10	<0.10	<0.10
11	Mercury	mg/kg	SOP No.:SOP/SOIL/42	<0.01	<0.01	<0.01	<0.01	<0.01	<0.01	<0.01	<0.01
12	Arsenic	mg/kg	SOP No.:SOP/SOIL/43	<0.01	<0.01	<0.01	<0.01	<0.01	<0.01	<0.01	<0.01
13	Petroleum Hydrocarbon	mg/kg	USEPA METHOD 9074	ND	ND	ND	ND	ND	ND	ND	ND



**JK LAKSHMI CEMENT LTD**  
**Malpuri Khurd, Khasadih**  
**Weather Monitoring Report For the Month of April to September 2025**  
 (Based on Hourly Readings from 12 Midnight to 12 Midnight)

Month	Ambient Temp. (°C)			R. Humidity %			Solar Radiation (wat/m <sup>2</sup> )			Wind Speed (m/s)			Wind Dir (Deg)	Bar. Pressure (IN-Hg)	Rainfall in (mm)
	Min	Max	Avg.	Min	Max	Avg.	Min	Max	Avg.	Min	Max	Avg.			
Apr25	21.04	43.13	31.855	23.84	33.77	28.31	3	650.3	169.9	0.01	4.6	1.09	SSE	1012.06	29
May25	19.2	40.5	31.0	23.0	32.4	27.8	5.4	701.9	164.8	0.01	6.98	1.0	SSE	1011.6	67.0
Jun25	23.0	41.3	30.2	24.4	31.8	27.3	1.6	734.6	139.9	0.01	4.52	0.9	NW	1010.9	76.0
July25	22.68	33.61	26.98	24.13	29.52	26.4	8.2	679.3	101.5	0.01	2.57	3.67	NW	1009.7	739
Aug25	24.3	36.6	29.3	49.4	99.8	79.7	11.6	750.3	138.4	0.03	9.09	1.9	SW	1027.9	224.5
Sep25	24.7	35.5	29.1	46.0	102.2	79.5	10.2	698.1	133.2	0.03	6.69	1.2	SE	1027.7	158.5

### Corporate Environment Responsibility

- An amount of around Rs. 15.50 Lakh have already towards expenditure for carrying out up- gradation / optimization activities.
- As per MOEF&CC Circular NO. 22-65/2017-IA-III dated 01.05.2018, we make an expenditure of 1% of additional capital investment, in area around our project under Corporate Environment Responsibility (CER ).

Sl. No	Activities under CER	Amount in curred Rs. ( In Lacs)	Exp. (In Lacs)	Activities Details in villages
1	Plantation in Community Area / Avenue Plantation	5.0	5.5	Plantation work at Nandani Khundani, Pitaura, Girhola, Khasadih
2	Establishment of Library to improve the quality of Educational	5.0	5.77	Establishment and Renovation of Community library at Nandini Khundani
3	Rainwater harvesting systems	2.0	2.2	Unit Establishment and Awareness program of Rain Water harvesting systems at Khasadih, Pitaura & Semaria
4	Hygiene & Rural Sanitation	2.0	2.1	Under Sanitation Program JKLC has deputed 03 Number of Garbage Tippler to collect garbage from door step at Khasadih.
				To control the mosquito growth and to control the malaria in nearby villages regular fogging work at Khasadih villages once in a month.
5	Establishment of Skill Development Centre	2.0	2.05	Establishment & Renovation of skill development center at Girhola
	<b>TOTAL</b>	<b>16.0</b>	<b>17.62</b>	

### Air Pollution Controlling Devices-



***Selective Non Catalytic Reduction***



***Flue Gas Desulphurization installed at Captive Power Plant***